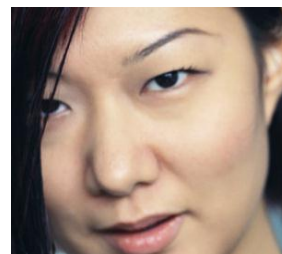
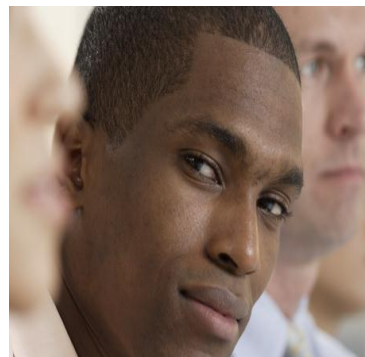


COUNTY OF SAN DIEGO HEALTH AND HUMAN SERVICES AGENCY



Behavioral Health Services Directory



ALCOHOL AND DRUG/MENTAL HEALTH SERVICES ACCESS AND CRISIS LINE (888) 724-7240
ACCESS AND CRISIS LINE FOR THE DEAF, HARD OF HEARING AND LATE DEAFENED (619) 641-6992

Type of Service	Program	Phone	Hours	Region	Populations	Languages	Cultural Competency	Specialties
Advocacy	Consumer Center for Health Education & Advocacy (CCEA) 1764 San Diego Ave., Ste. 200 San Diego, CA 92110	(877) 734-3258	Mon - Fri 9:00 am - 5:00 pm	Countywide	All Ages	Spanish, Vietnamese, Mandarin	Older Adult, GLBT, HML, Afr Amer, HL, African Refugee, SEA, EE, ME	Advocacy, grievances and appeals for consumers of public outpatient services.
Advocacy	Patient Advocacy Services Jewish Family Service of San Diego 8788 Balboa Ave. San Diego, CA 92123	(800) 479-2233	Mon - Fri 8:00 am - 5:00 pm	Countywide	Children, Adults			Advocacy, protection of patients' rights and grievances and appeals for consumers in acute care or residential programs.
Advocacy	Recovery Innovations 3565 Del Rey St. Ste. 202 San Diego, CA 92109	(858) 274-4650	Mon - Fri 8:30 am - 5:00 pm	Countywide	Adult, Older Adult	Spanish	Older Adult, Afr Amer, Chaldean, GLBT	Wellness Recovery Action Plan (WRAP), Wellness and empowerment in life and living; Employment Training; Other recovery-oriented classes.

Type of Service	Program	Phone	Hours	Region	Populations	Languages	Cultural Competency	Specialties
Advocacy Children, Youth & Families	Family/Youth Partner Program Harmonium, Inc. 5275 Market St., Ste. G San Diego, CA 92114	(858) 684-3080	Mon - Fri 9:00 am - 4:30 pm	Central	Children, TAY, their siblings and families at Southeast Mental Health Clinic			Support wellness and resiliency and assist with access to other community resources.
Advocacy Children, Youth & Families	Family and Youth Roundtable 5005 Texas St., Ste.104 San Diego, CA 92108	(619) 546-5852	N/A	Countywide	Children, Youth and Families			Coaching, training and consulting that supports partnerships between consumers, families and mental health providers.
Advocacy Children, Youth & Families	Family/Youth Partner Program San Diego Youth Services 2250 Fourth Ave. Ste. 301 San Diego, CA 92101	(619) 525-9903	Mon - Fri 9:00 am - 6:00 pm (Family Youth Support Partners available 24 hours a day)	Countywide	Children, Adolescents	Spanish	GLBT, HML Runaway	Family/Youth Peer Support.

Type of Service	Program	Phone	Hours	Region	Populations	Languages	Cultural Competency	Specialties
AOD Justice Programs Children, Youth & Families	Breaking Cycles San Diego Youth Services (SDYS) 7798 Starling Dr. Ste. 200 San Diego, CA 92123	(858) 492-2300	Mon - Fri 8:00 am - 5:00 pm	Central	Adolescents (Juvenile Probation only)		Requirements met	Provides alcohol and drug assessment, intervention, educational groups, and case management for probation involved juveniles.
AOD Case Management (referrals only)	Parolee Partnership Program (P3) Mental Health Systems, Inc. (MHS) 2535 Camino Del Rio S. Ste. 230 San Diego, CA 92108	(619) 220- 7090 (referrals only)	Mon - Fri 8:30 am - 4:30 pm	Countywide	Adult, Older Adult Parolee Clients Only (Parole Agent referrals only)		Requirements met	Six months of intensive case management and recovery services to ex-offenders and parolees at risk of continuing their alcohol and/or drug abuse.
AOD Case Management Perinatal Children, Youth & Families	ParentCare Perinatal Case Management and Dependency Drug Court (DDC) Services Vista Hill Foundation 4990 Williams Ave. La Mesa, CA 91941	(619) 668-4200	Mon - Fri 8:30 am - 4:30 pm	East	Women		Requirements met	A continuous, long-term outpatient case management to assist women who are drug and/or alcohol users, pregnant or parenting, in finding services to support long-term recovery. Provides DDC services.

Type of Service	Program	Phone	Hours	Region	Populations	Languages	Cultural Competency	Specialties
AOD Detoxification Services	Detox McAlister Institute for Treatment and Education (MITE) (Call for Locations)	(619) 465-7303	24/7	Countywide	Adults, Older Adults	Spanish	Requirements met	Offers a 5-14 day residential social model detoxification program for adults who are experiencing problems with alcohol and other drugs.
AOD Detoxification Services Children, Youth & Families	Options, KIVA & Perinatal Detox McAlister Institute for Treatment and Education (MITE) 2049 Skyline Dr. Lemon Grove, CA 91945+	(619) 465-7303	24/7 (Office Hours 9:00 am - 4:00 pm Mon - Fri)	East	Adult Women and their Children		Requirements met	Offers short term (5-14 days) non-medical detoxification for women, especially those who are pregnant and/or experiencing problems with Alcohol and other drugs.
AOD Justice Programs	Serial Inebriate Program (SIP) Mental Health Systems, Inc. (MHS) 3340 Kemper St. Ste. 105 San Diego, CA 92110	(619) 523-8121	Call for hours	North Central	Adults, Older Adults	Spanish	Requirements met	Provides non-residential treatment to chronic alcoholics referred by the San Diego Police Dept. Services include counseling and linkages to appropriate community resources and sober living.

Type of Service	Program	Phone	Hours	Region	Populations	Languages	Cultural Competency	Specialties
AOD Justice Programs Adult Drug Court (referrals only)	East County Center for Change - Adult Drug Court Mental Health Systems, Inc. (MHS) 545 Magnolia Ave. El Cajon, CA 92020	(619) 579-0947 (Court referrals only)	Mon - Fri 8:00 am - 6:00 pm	East	Adults, Older Adults (Superior Court referrals only)		Requirements met	Provides a 12-month outpatient substance abuse treatment program with six months of after care to alcohol or drug-abusing felons.
AOD Justice Programs Adult Drug Court (referrals only)	North County Center for Change - Adult Drug Court Mental Health Systems, Inc. (MHS) 504 West Vista Way Vista, CA 92083	(760) 940-1836 (Court referrals only)	Mon - Fri 9:00 am - 5:00 pm	North Central	Adults, Older Adults (Court referrals only)		Requirements met	Provides a 12-month outpatient substance abuse treatment program with six months of after care to alcohol or drug-abusing felons.
AOD Justice Programs Adult Drug Court (referrals only)	San Diego Center for Change - Adult Drug Court Mental Health Systems, Inc. (MHS) 3340 Kemper St. Stes. 101 & 209 San Diego, CA 92110	(619) 758-1433 (Court referrals only)	Mon - Fri 8:00 am - 5:00 pm	Central	Adults, Older Adults (Superior Court referrals only)		Requirements met	Provides a 12-month outpatient substance abuse treatment program with six months of after care to alcohol or drug-abusing felons.

Type of Service	Program	Phone	Hours	Region	Populations	Languages	Cultural Competency	Specialties
AOD Justice Programs Adult Drug Court (referrals only)	South County Center for Change - Adult Drug Court Mental Health Systems (MHS) 1515 Palm Ave. San Diego, CA 92154	(619) 429-4117 (Court referrals only)	Mon - Fri 8:30 am - 5:30 pm	South	Adults, Older Adults (Court referrals only)	Spanish	Requirements met	Provides a 12-month outpatient substance abuse treatment program with six months of after care to alcohol or drug-abusing felons.
AOD Justice Programs DUI	Central District Driving Under the Influence (DUI) Program San Diego State University 9245 Sky Park Ct. Ste. 101 San Diego, CA 92123	(858) 467-6810	Mon - Fri 8:00 am - 5:00 pm (Business office closed Noon - 1:00 pm)	Central	Adults, Older Adults	Spanish	Requirements met	Provides mandated services for any individual arrested for, or convicted of, driving under the influence of alcohol and/or drugs in California. Enrollment requires a referral from court, probation, or DMV.
AOD Justice Programs DUI Program (referrals only)	DUI Program MAAC Project 1355 Third Ave. Chula Vista, CA 91911	(619) 409-1780 (referrals only)	Mon - Fri 8:30 am - 5:00 pm	South	Adults, Older Adults (referrals only)	Spanish	Requirements met	Provides mandated services for any individual arrested for, or convicted of, driving under the influence of alcohol and/or drugs in California. Enrollment requires a referral from court, probation, or DMV.

Type of Service	Program	Phone	Hours	Region	Populations	Languages	Cultural Competency	Specialties
AOD Justice Programs DUI Program (referrals only)	Occupational Health Services DUI Program MHN 1050 Los Vallecitos Blvd. Ste. 109 San Marcos, CA 92069	(760) 752-5300 (referrals only) (760) 891-1500	Mon - Fri 9:00 am - 8:00pm Sat 8:00am - 4:30pm	North	Adults, Older Adults	Spanish	Requirements met	Provides mandated services for any individual arrested for, or convicted of, driving under the influence of alcohol and/or drugs in California. Enrollment requires a referral from court, probation, or DMV.
AOD Justice Programs DUI Program (referrals only)	East County ACCORD DUI Program Episcopal Community Services (ECS) 7474 El Cajon Blvd. La Mesa, CA 91941	(619) 741-8147 (referrals only)	Mon - Fri 9:00 am - 6:00 pm	East	Adults, Older Adults (referrals only)	Spanish	Requirements met	Provides mandated services for any individual arrested for, or convicted of, driving under the influence of alcohol and/or drugs in California. Enrollment requires a referral from court, probation, or DMV.
AOD Justice Programs Juvenile Drug Court (referrals only) Children, Youth &	Juvenile Drug Court Vista Hill Foundation 2901 Meadow Lark Dr. San Diego, CA 92123	(858) 694-4729 (court referrals only)	Mon - Fri 8:00 am - 5:00 pm	Countywide	Adolescents referred by Court		Requirements met	Offers substance abuse case management for youth in drug court. Covers abuse and/or addiction issues. Requires referral from court.

Type of Service	Program	Phone	Hours	Region	Populations	Languages	Cultural Competency	Specialties
AOD Justice Programs PC 1000 (referrals only)	Central East Region PC 1000 (Deferred Entry of Judgment & AIDS Education Program) Mental Health Systems, Inc. (MHS) 6244 El Cajon Blvd. Ste. 15 San Diego, CA 92115	(619) 287-8225 (referrals only)	Call for hours	Central	Adults, Older Adults (referrals only)	Spanish	Requirements met	PC 1000 Deferred Entry of Judgment/AIDS Education Program, provides court-ordered education and counseling services related to specific drug-related offenses and prostitution offenses. Requires a referral form, court or probation.
AOD Justice Programs PC 1000 (referrals only)	Mid-Coast Region PC 1000 (Deferred Entry of Judgment & AIDS Education Program) Mental Health Systems, Inc.(MHS) 3340 Kemper St., Ste. 105 San Diego, CA 92110	(619) 523-8121 (referrals only)	Call for hours	Central/ Mid-Coast	Adults, Older Adults (referrals only)	Spanish	Requirements met	PC 1000 Deferred Entry of Judgment/AIDS Education Program, provides court-ordered education and counseling services related to specific drug-related offenses and prostitution offenses. Requires a referral form, court or probation.
AOD Justice Programs PC 1000 (referrals only)	East County PC 1000 (Deferred Entry of Judgment & AIDS Education Program) McAlister Institute for Treatment and Education (MITE) 1365 N. Johnson Ave. Ste. 111 El Cajon, CA 92020	(619) 440-4801 Ext. 121 (referrals only)	Call for hours	East	Adults, Older Adults (referrals only)	Spanish	Requirements met	PC 1000 Deferred Entry of Judgment/AIDS Education program. Provides court-ordered education and counseling services related to specific drug-related offenses and prostitution offenses. Requires a referral from court or Probation.

Type of Service	Program	Phone	Hours	Region	Populations	Languages	Cultural Competency	Specialties
AOD Justice Programs PC 1000 (referrals only)	N. Inland Region PC 1000 (Deferred Entry of Judgment & AIDS Education Program) Mental Health Systems, Inc.(MHS) 620 North Ash St. Escondido, CA 92027	(760) 741-7708 (referrals only)	Call for hours	North Inland	Adults, Older Adults (referrals only)	Spanish	Requirements met	PC 1000 Deferred Entry of Judgment/AIDS Education Program, provides court-ordered education and counseling services related to specific drug-related offenses and prostitution offenses. Requires a referral form, court or probation.
AOD Justice Programs PC 1000 (referrals only)	North Coastal PC 1000 (Deferred Entry of Judgment & AIDS Education Program) Mental Health Systems, Inc.(MHS) 2821 Oceanside Blvd. Oceanside, CA 92054	(760) 721-2743 (referrals only)	Call for hours	North Coastal	Adults, Older Adults (referrals only)	Spanish	Requirements met	PC 1000 Deferred Entry of Judgment/AIDS Education program. Provides court-ordered education and counseling services related to specific drug-related offenses and prostitution offenses. Requires a referral from court or Probation.
AOD Justice Programs PC 1000 (referrals only)	South Bay PC 1000 (Deferred Entry of Judgment & AIDS Education Program) Mental Health Systems, Inc.(MHS) 1180 Third Ave. Ste. C-13 Chula Vista, CA 91911	(619) 691-8164 (619) 422-3918 (Superior Court referrals only)	Call for hours	South	Adults, Older Adults (Superior Court referrals only)	Spanish	Requirements met	PC 1000 Deferred Entry of Judgment/AIDS Education program. Provides court-ordered education and counseling services related to specific drug-related offenses and prostitution offenses. Requires a referral from court or Probation.

Type of Service	Program	Phone	Hours	Region	Populations	Languages	Cultural Competency	Specialties
AOD Non-Residential Services Children, Youth & Families	Union of Pan-Asian Communities (UPAC) 3288 El Cajon Blvd. San Diego, CA 92104	(619) 521-5720	Mon - Fri 10:00 am - 6:30 pm	Central	Adolescents	Spanish, Vietnamese, Tagalog and other API languages	Requirements met	Alcohol and other drug treatment and recovery services for adolescents with Medi-Cal coverage. Offers after-school programs.
AOD Non-Residential Services	Bridges Intensive Outpatient Program Vista Hill Foundation 4990 Williams Ave. La Mesa, CA 91941	(619) 668-4203	Mon, Wed, Thu 5:00 pm - 9:00 pm	East, Central	Adults, Older Adults	Spanish	Requirements met	Alcohol and other drug treatment services and other drug-induced problems, including co-occurring disorders, to Drug Medi-Cal eligible adults. Services include outpatient, individual, family, and group counseling.
AOD Non-Residential Services	Central East Regional Recovery Center (RRC) Mental Health Systems, Inc.(MHS) 6244 El Cajon Blvd. Ste. 15 San Diego, CA 92115	(619) 287-8225	Call for hours	Central	Adults, Older Adults	Spanish	Requirements met	Alcohol and other drug treatment and recovery services, including co-occurring disorders, PC 1000 drug diversion services, and Positive Parenting for Men in Recovery. Services include outpatient, individual, family, and group counseling.

Type of Service	Program	Phone	Hours	Region	Populations	Languages	Cultural Competency	Specialties
AOD Non-Residential Services	East Regional Recovery Center (RRC) McAlister Institute for Treatment and Education (MITE) 1365 N. Johnson Ave., Ste. 111 El Cajon, CA 92020	(619) 440-4801	Call for hours	East	Adults, Older Adults	Spanish	Requirements met	Alcohol and other drug treatment and recovery services, including co-occurring disorders, PC 1000 drug diversion services, and Positive Parenting for Men in Recovery. Services include outpatient, individual, family, and group counseling.
AOD Non-Residential Services	Mid-Coast Regional Recovery Center (RRC) Mental Health Systems, Inc. (MHS) 3340 Kemper St. Ste. 105 San Diego, CA 92110	(619) 523-8121	Call for hours	North Central	Adults, Older Adults	Spanish	Requirements met	Alcohol and other drug treatment and recovery services, including co-occurring disorders, PC 1000 drug diversion services, and Positive Parenting for Men in Recovery. Services include outpatient, individual, family, and group counseling.
AOD Non-Residential Services	North Inland Regional Recovery Center (RRC) Mental Health Systems, Inc. (MHS) 620 North Ash St. Escondido, CA 92027	(760) 741-7708	Call for hours	North Inland	Adults, Older Adults	Spanish	Requirements met	Alcohol and other drug treatment and recovery services, including co-occurring disorders, PC 1000 drug diversion services, and Positive Parenting for Men in Recovery. Services include outpatient, individual, family, and group counseling.

Type of Service	Program	Phone	Hours	Region	Populations	Languages	Cultural Competency	Specialties
AOD Non-Residential Services	Regional Recovery Center (RRC) South Bay McAlister Institute for Treatment and Education (MITE) 1180 Third Ave. Ste. C-13 Chula Vista, CA 91911	(619) 691-8164	Mon - Thu 9:00 am - 9:00 pm Fri 9:00 am - 5:30 pm	South	Adults, Older Adults	Spanish	Requirements met	Alcohol and other drug treatment and recovery services, including co-occurring disorders, PC 1000 drug diversion services, and Positive Parenting for Men in Recovery. Services include outpatient, individual, family, and group counseling.
AOD Non-Residential Services	Regional Recovery Center (RRC) North Coastal McAlister Institute of Treatment and Education (MITE) 2821 Oceanside Blvd. Oceanside, CA 92054	(760) 721-2781	Call for hours	North Coastal	Adults, Older Adults	Spanish	Requirements met	Alcohol and other drug treatment and recovery services, including co-occurring disorders, PC 1000 drug diversion services, and Positive Parenting for Men in Recovery. Services include outpatient, individual, family, and group counseling.
AOD Non-Residential Services	Union of Pan Asian Communities (UPAC) 3288 El Cajon Blvd. Ste. 13 San Diego, CA 92104	(619) 521-5720	Mon - Fri 10:00am - 6:30pm	Central	Adults, Older Adults	Spanish, Vietnamese, Tagalog, and other API languages	Requirements met	Alcohol and other drug treatment and recovery services, including co-occurring disorders, targeting Asian and Pacific Islander (API) adults, refugees, immigrants and other underserved populations. Outpatient, individual, family, and group counseling.

Type of Service	Program	Phone	Hours	Region	Populations	Languages	Cultural Competency	Specialties
AOD Non-Residential Services Children, Youth & Families	North Inland Teen Recovery Center (TRC) Mental Health Systems, Inc.(MHS) 340 Rancheros Drive Ste. 166 San Marcos, CA 92069	(760) 744-3672	Mon - Fri 9:00 am - 6:00 pm	North Inland	Adolescents		Requirements met	An individualized non-residential treatment service, with on-site classroom facilities.
AOD Non-Residential Services Children, Youth & Families	Palavra Tree Teen Recovery Center (TRC) Central Southeast 1212 South 43rd St., Ste. C San Diego, CA 92113	(619) 263-7768	Mon - Fri 8:30 am - 6:30 pm	Central	Adolescents	Spanish	Requirements met	A non-residential alcohol and drug treatment and recovery services for adolescents in the central and southeast regions of the City of San Diego.
AOD Non-Residential Services Children, Youth & Families	ParentCare Family Recovery Center (Central) Vista Hill Foundation 4125 Alpha St. Ste. G San Diego, CA 92113	(619) 266-0166	Mon - Fri 8:00 am - 5:00 pm	Central	Women and Children	Spanish	Requirements met	A 6-9 month program that includes an initial diagnostic assessment, treatment planning, individual counseling, treatment sessions 3 evenings/week.

Type of Service	Program	Phone	Hours	Region	Populations	Languages	Cultural Competency	Specialties
AOD Non-Residential Services Children, Youth & Families	East County/Northern Teen Recovery Center (TRC) McAlister Institute for Treatment and Education (MITE) 550 Fesler St. Ste. G-3 El Cajon, CA 92020	(619) 588-5361	Mon - Fri 10:30 am - 7:00 pm Sat 9:00am - 1:00pm	East	Adolescents		Requirements met	An individualized non-residential treatment service.
AOD Non-Residential Services Children, Youth & Families	Family Recovery Center Mental Health Systems, Inc. (MHS) 1100 Sportfisher Dr. Oceanside, CA 92054	(760) 439-6702	Mon - Thu 8:00 am - 8:00 pm Fri 8:00 am - 6:30 pm	North Coastal	Women, Children		Requirements met	A six- to nine-month day treatment program serving pregnant mothers with a history of drug or alcohol abuse, mothers of newly delivered children who have tested positive for drugs. Child care available.
AOD Non-Residential Services Children, Youth & Families	Palavra Tree Teen Recovery Center (TRC) Central Southwest 2878 Imperial Ave. San Diego, CA 92102	(619) 263-7768	Call for hours	Central	Adolescents		Requirements met	Provides non-residential alcohol and drug treatment and recovery services for adolescents in the central and southeast regions of the City of San Diego.

Type of Service	Program	Phone	Hours	Region	Populations	Languages	Cultural Competency	Specialties
AOD Non-Residential Services Children, Youth & Families	Teen Options San Diego Youth Services 3660 Fairmount Ave. San Diego, CA 92105	(619) 521-2250	Mon - Fri 8:00 am - 4:30 pm	Central	Pregnant and Parenting adolescent girls and their children		Requirements met	A day treatment program for pregnant and parenting adolescent women who are using alcohol or drugs. Child care available.
AOD Non-Residential Services Children, Youth & Families	North County Serenity House - Serenity Too Outpatient and Day Treatment 130 S. Fig St. Escondido, CA 92025	(760) 741-5098	Mon - Fri 8:30 am - 4:30 pm	North Inland	Adult Women and their children		Requirements met	A nonresidential day treatment program for alcoholic and drug-dependent women. Counseling and AA and NA group meetings are included in the treatment. Child care available.
AOD Non-Residential Services Children, Youth & Families	Phoenix House Teen Recovery Center (TRC) North Coastal 785 Grand Ave. Ste. 220 Carlsbad, CA 92008	(760) 729-2830	Mon - Fri 10:00 am - 9:00 pm	North Coastal	Adolescents		Requirements met	An outpatient substance abuse treatment services for adolescents and their families. Offers after-school treatment, weekday sessions, and structured weekend activities.

Type of Service	Program	Phone	Hours	Region	Populations	Languages	Cultural Competency	Specialties
AOD Non-Residential Services Children, Youth & Families	Rachel's Women's Center Catholic Charities, Inc. 759 Eighth Ave. San Diego, CA 92101	(619) 696-0873	Mon - Sun 7:00 am - 5:00 pm	Central	Homeless Women		Requirements met	A daytime drop-in recovery center for homeless women in downtown San Diego. Offers lunch, laundry, and shower facilities on a first-come, first-served basis.
AOD Non-Residential Services Children, Youth & Families	Teen Recovery Center (TRC) North Rural McAlister Institute for Treatment and Education (MITE) 323 Hunter St. Ramona, CA 92065	(760) 788-6520	Mon - Fri 10:30 am - 7:00 pm	North	Adolescents		Requirements met	An individualized non-residential treatment service.
AOD Non-Residential Services Children, Youth & Families	East County/Southern Teen Recovery Center (TRC) McAlister Institute for Treatment and Education (MITE) 7800 University Ave., Ste. A-1 La Mesa, CA 91942	(619) 465-4349	Mon - Fri 10:30 am - 7:00 pm Sat 9:00am - 1:00pm	East	Adolescents		Requirements met	

Type of Service	Program	Phone	Hours	Region	Populations	Languages	Cultural Competency	Specialties
AOD Non-Residential Services Children, Youth & Families	Harmony West Women's Recovery Center Mental Health Systems, Inc. (MHS) 6154 Mission Gorge Rd. Ste. 120 San Diego, CA 92120	(619) 285-1718	Mon - Fri 8:30 am - 8:30 pm	North Central	Women and Children		Requirements met	An outpatient treatment and recovery facility for female recovering alcoholics and drug addicts, their children, and families. Child care available.
AOD Non-Residential Services Children, Youth & Families	Palavra Tree - Central North 4001 El Cajon Blvd. San Diego, CA 92105	(610) 280-2300	Mon - Fri 8:30 am - 6:30 pm	Central	Adolescents		Requirements met	Provides non- residential alcohol and drug treatment and recovery services for adolescents in the central and southeast regions of the City of San Diego.
AOD Non-Residential Services Children, Youth & Families	South Bay Women's Recovery Center McAlister Institute for Treatment and Education (MITE) 2414 Hoover Ave. National City, CA 91950	(619) 336-1226	Mon - Thur 9:00 am - 9:00 pm Fri 9:00am -5:30pm	South	Women, Children		Requirements met	Offers a day treatment program serving pregnant women and mothers who have a history of drug or alcohol abuse. Co-op childcare is provided.

Type of Service	Program	Phone	Hours	Region	Populations	Languages	Cultural Competency	Specialties
AOD Non-Residential Services Children, Youth & Families	Teen Recovery Center (TRC) South Bay East McAlister Institute for Treatment and Education (MITE) 2429 Fenton St. Bldg. 5 Chula Vista, CA 91914	(619) 482-9300	Call for hours	South	Adolescents	Spanish	Requirements met	An individualized non-residential treatment service.
AOD Non-Residential Services Children, Youth & Families	Teen Recovery Center (TRC) North Central McAlister Institute of Treatment and Education (MITE) 7867 Convoy Ct., Bldg.5, Ste. 302 San Diego, CA 92111	(858) 277-4633	Mon Fri 9:00 am - 6:00 pm	Central	Adolescents		Requirements met	
AOD Non-Residential Services Children, Youth & Families	ParentCare Family Recovery Center (East) Vista Hill Foundation 4990 Williams Ave. La Mesa, CA 91941	(619) 668-4200	Mon - Fri 8:00 am - 5:00 pm	East	Women and Children	Spanish	Requirements met	A 6-9 month program that includes an initial diagnostic assessment, treatment planning, individual counseling, treatment sessions 3 evenings/week.

Type of Service	Program	Phone	Hours	Region	Populations	Languages	Cultural Competency	Specialties
AOD Prevention and Education Services	Countywide Media Advocacy Project 2615 Camino del Rio South Suite 300 San Diego, CA 92108	(619) 497-9100	Mon - Fri 9:00 am - 5:00 pm	Countywide	All	Spanish	Requirements met	Provides coordination, planning, technical assistance and support to alcohol and other drug prevention service providers and strategic partners regarding media advocacy efforts.
AOD Prevention and Education Services	East County Community Change Project Institute for Public Strategies 131 Avocado Ave. El Cajon, CA 92020	(619) 456-9607	Mon - Fri 9:00 am - 5:00 pm	East	All		Requirements met	Provides alcohol and other drug prevention activities designed to reduce substance abuse in communities by using community-based, environmental prevention strategies.
AOD Prevention and Education Services	Methamphetamine Strike Force (MSF) Prescription Drug Abuse Task Force (PDATF) 2615 Camino del Rio South Ste. 300 San Diego, CA 92108	(760) 749-8792	Mon - Fri 9:00 am - 5:00 pm	Countywide	All	Spanish	Requirements met	Facilitates and coordinates the multi-system, multi-partner Methamphetamine Strike Force to address methamphetamine issues in San Diego County.

Type of Service	Program	Phone	Hours	Region	Populations	Languages	Cultural Competency	Specialties
AOD Prevention and Education Services	Mid-City for Youth Social Advocates for Youth (SAY) San Diego, Inc. 4275 El Cajon Blvd. San Diego, CA 92105	(619) 283-9624	Mon - Fri 8:30 am - 5:00 pm	Central	All	Spanish	Requirements met	Regional prevention services provide alcohol and other drug prevention activities designed to reduce substance abuse in communities.
AOD Prevention and Education Services	North Coastal Prevention Coalition Vista Community Clinic 1000 Vale Terrace Vista, CA 92084	(760) 407-1220 Ext. 150	Mon - Fri 8:00 am - 4:30 pm	North Coastal	All	Spanish	Requirements met	Regional prevention services provide alcohol and other drug prevention activities designed to reduce substance abuse in communities.
AOD Prevention and Education Services	North Inland Community Prevention Program (NICPP) Mental Health Systems 12344 Oak Knoll Rd. Suite C-1 Poway, CA 92064	(858) 391-9303	Mon - Fri 9:00 am - 5:00 pm	North Inland	All		Requirements met	Regional prevention services provide alcohol and other drug prevention activities to reduce substance in communities.

Type of Service	Program	Phone	Hours	Region	Populations	Languages	Cultural Competency	Specialties
AOD Prevention and Education Services	North City Prevention Coalition Social Advocates for Youth (SAY) San Diego, Inc. 4340 Genesee Ave. Ste. 207 San Diego, CA 92117	(858) 974-3603	Mon - Fri 9:00 am - 5:00 pm	North	All		Requirements met	Regional prevention services provide alcohol and other drug prevention activities designed to reduce substance abuse in communities.
AOD Prevention and Education Services	Prevention Evaluation Project Center for Community Research 3111 Camino Del Rio N. Ste. 400 San Diego, CA 92108	(619) 528-2235	Mon - Fri 9:00 am - 5:00 pm	Countywide	All		Requirements met	Prevention services evaluation.
AOD Prevention and Education Services	South Bay Community Change Project Institute for Public Strategies 2615 Camino del Rio South San Diego, CA 92108	(619) 476-9100	Mon - Fri 9:00 am - 5:00 pm	South	All	Spanish	Requirements met	Regional prevention services provide alcohol and other drug prevention activities designed to reduce substance abuse in communities.

Type of Service	Program	Phone	Hours	Region	Populations	Languages	Cultural Competency	Specialties
AOD Prevention and Education Services Children, Youth & Families	Friday Night Live/Club Live (High School Youth) San Diego County Office of Education 6401 Linda Vista Rd. San Diego, CA 92111	(858) 292-3557	Mon - Fri 8:30 am - 8:30 pm	Countywide	Schools	Spanish	Requirements met	Provides Friday Nite Live and Club Live services, alternate activities and youth leadership development in County schools to reduce youth alcohol and other drug use.
AOD Residential Detoxification Services	Detox INTAKE ONLY Volunteers of America (VOA) 101 16th St. San Diego CA 92101	(619) 232-9343	24/7	Central	Adults, Older Adults	Spanish	Requirements met	Offers a 5-14 day residential social model detoxification program for adults who are experiencing problems with alcohol and other drugs.
AOD Residential Program	Alpha Project for the Homeless Casa Raphael 993 Postal Way Vista, CA 92083	(760) 630-9922	24/7; Intake 8:00-5:00	North Coastal	Adults, Older Adults: Males 18-62		Requirements met	Residential treatment program for men who are homeless, at risk of becoming homeless, and zero income.

Type of Service	Program	Phone	Hours	Region	Populations	Languages	Cultural Competency	Specialties
AOD Residential Program	Amigos Sobrios Volunteers of America (VOA) 741 11th Ave. San Diego, CA 92101	(619) 232-7754	24/7	Central	Men, Latino Focused	Spanish	Requirements met	A 17-bed, long-term, bilingual and bicultural residential alcohol and drug facility. Provides structure, support, referral, and recreation in an alcohol- and drug-free environment. Provides a social model residential recovery home for Latino males.
AOD Residential Program	Casa de Milagros MAAC Project 1127 South 38th St. San Diego, CA 92113	(619) 262-4002	24/7	Central	Women, Latina	Spanish	Requirements met	A culturally specific residential alcohol and drug recovery program targeting the Latina substance abuser. Uses the 12-step method of treatment.
AOD Residential Program	CRASH Short Term II Women's Residential Program 2410 "E" St. San Diego, CA 92102	(619) 234-3346	24/7	Central	Adult Women, Older Adult Women	Spanish	Requirements met	A short-term residential alcohol and drug treatment program (30-90 days) for women, including group therapy, individual counseling, and peer support.

Type of Service	Program	Phone	Hours	Region	Populations	Languages	Cultural Competency	Specialties
AOD Residential Program	CRASH Bill Dawson Residential Recovery Program (Men/Women) 726 "F" St., 2nd Floor San Diego, CA 92101	(619) 239-9691	24/7	Central	Adults, Older Adults		Requirements met	A long-term residential rehabilitation program for alcohol and drug abusers (4-6 months). Provides group therapy, individual counseling, and peer support to assist residents in remaining drug free.
AOD Residential Program	CRASH Short-Term I (Men) 4161 Marlborough Ave. San Diego, CA 92105	(619) 282-7274	24/7	Central	Adult, Older Adult Males	Spanish	Requirements met	A short-term residential alcohol and drug treatment program (30-90 days) for men, including group therapy, individual counseling, and peer support. Program also includes nonresidential after-care services.
AOD Residential Program	Crossroads Foundation 3594 Fourth Ave. San Diego, CA 92103	(619) 296-1151	24/7	Central	Women		Requirements met	For women recovering from alcoholism and/or drug addiction. Self-help-oriented treatment based on the AA and NA 12-step programs.

Type of Service	Program	Phone	Hours	Region	Populations	Languages	Cultural Competency	Specialties
AOD Residential Program	Freedom Ranch, San Diego, Inc. (Men) 1777 Buckman Springs Rd. Campo, CA 91906	(619) 478-5696	24/7	East	Men		Requirements met	A residential alcohol and drug recovery program for men. Services include educational groups and AA and NA meetings and peer group interactions.
AOD Residential Program	Heartland House Twelfth Step House, Inc. 5855 Streamview Dr. San Diego, CA 92105	(619) 287-5460	24/7	Central	Men	Spanish	Requirements met	Residential treatment that offers residents an opportunity to regain and maintain sobriety through close association with persons having many years of sober living. Offers 12-step meetings, alcohol and drug education, relapse prevention.
AOD Residential Program	House of Metamorphosis 2970 Market St. San Diego, CA 92102	Intake (619) 236-9217	24/7	Central	Adults, Older Adults Men and Women	Spanish	Requirements met	A residential treatment for alcohol and drug abusers. Treatment includes individual, group, and family counseling; anger management; recreation therapy; psychiatric evaluations; parenting classes; substance abuse education.

Type of Service	Program	Phone	Hours	Region	Populations	Languages	Cultural Competency	Specialties
AOD Residential Program	Nosotros MAAC Project 73 North 2nd Ave. Bldg. B Chula Vista, CA 91910	(619) 426-4801	24/7	South	Men, Latino	Spanish	Requirements met	A culturally specific residential alcohol and drug abuse recovery program targeting Latino male substance abusers. Uses the 12-Step method.
AOD Residential Program	Pathfinders 2980 Cedar St. San Diego, CA 92102	(619) 239-7370	24/7	Central	Men		Requirements met	Provides a 33-bed residential treatment home for men who need assistance in order to recover from alcoholism. Operates as a social model recovery home and provides peer group meetings, alcohol education, and recovery planning. Holds weekly AA meetings.
AOD Residential Program	Renaissance Treatment Center Volunteers of America (VOA) 2300 E. 7th St. National City, CA 91950	(619) 232-9343	24/7	South	Adults, Older Adults	Spanish	Requirements met	A long-term residential treatment for adults with alcohol or drug problems. Also offers Self-help-oriented treatment includes awareness discussions, substance abuse recovery education, recovery planning, study groups, and meetings.

Type of Service	Program	Phone	Hours	Region	Populations	Languages	Cultural Competency	Specialties
AOD Residential Program	Stepping Stone 3767 Central Ave. San Diego, CA 92105	(619) 584-4010	24/7	Central	Adults, Older Adults (Gay/Lesbian emphasis)		Requirements met	A 30-bed co-ed residential alcohol and drug recovery program. Services include individual and group counseling and AA and NA meetings. Special emphasis on services to LGBT populations.
AOD Residential Program	The Way Back 2516 "A" St. San Diego, CA 92102	(619) 235-0592	Mon - Fri 8:00 am -11:00 pm	Central	Men		Requirements met	A 27-bed residential facility for male alcoholics. The rehabilitation program includes AA meetings, alcohol education, referral to community resources, and individual, group, and family participation.
AOD Residential Program	The Fellowship Center 737 East Grand Ave. Escondido, CA 92025	(760) 745-8478	24/7	North Inland	Men	Spanish	Requirements met	A long-term residential treatment for men with alcohol or drug problems. Also offers a day treatment program. Self-help-oriented treatment includes awareness discussions, substance abuse recovery education, recovery planning, study groups, and meetings.

Type of Service	Program	Phone	Hours	Region	Populations	Languages	Cultural Competency	Specialties
AOD Residential Program	Tradition One, Inc. 4104 Delta St. San Diego, CA 92113	(619) 264-0141	Mon - Thur 7:00 am - 4:00 pm Fri 7:00am - 12:00 pm	Central	Adults, Older Adults		Requirements met	A 24-hour residential alcoholism and drug addiction treatment program for men and women. Provides individual and group counseling sessions, on-site and outside AA and NA meetings, guest speakers, education.
AOD Residential Program	Turning Point Home of San Diego, Inc. 1315 25th St. San Diego, CA 92102	(619) 233-0067	24/7	Central	Women		Requirements met	A long-term recovery home for 20 women (focus is on alcoholism or alcoholism combined with drug abuse). Residents stay for a minimum of 3 months and up to 2 years.
AOD Residential Program	Veterans Village of San Diego 4141 Pacific Highway San Diego, CA 92110	(619) 497-0142	24/7	Central	Adults, Older Adults	Spanish	Requirements met	A residential drug and alcohol treatment for male and female homeless veterans. Clients work with a case manager to develop a recovery plan.

Type of Service	Program	Phone	Hours	Region	Populations	Languages	Cultural Competency	Specialties
AOD Residential Program Children, Youth & Families	North County Serenity House (Address confidential. Call for more information.)	(760) 747-1015 (760) 747-5098	Mon, Fri 8:00 am - 5:00 pm Tue, Thu 8:00 am - 9:00 pm	North Inland	Adult Women and their children	Spanish	Requirements met	A residential treatment facilities for women, with or without children, who have alcohol and drug dependencies. Minimum stay is 90 days. Offers individual and group counseling, as well as, AA and NA 12-step programs. Child care available.
AOD Residential Program Children, Youth & Families	Adolescent Group Homes McAlister Institute for Treatment and Education (MITE) (Locations are confidential. Please call for more information.)	(619) 442-0277 Ext. 121	24/7	Countywide	Adolescents		Requirements met	A residential program for up to 21 days for adolescents who are experiencing problems with alcohol and other drugs. Service includes group and individual treatment, educational workshop, life skills and more.
AOD Residential Program Children, Youth & Families	KIVA McAlister Institute for Treatment and Education (MITE) 2049 Skyline Dr. Lemon Grove, CA 91945	(619) 465-7303	24/7 (Office Hours 9:00 am - 4:00 pm Mon - Fri)	East	Adult Women, including those who are pregnant or have children.			Women's long term residential alcohol and other drug treatment and recovery services for women and their children. Free child care available on-site.

Type of Service	Program	Phone	Hours	Region	Populations	Languages	Cultural Competency	Specialties
AOD Residential Program Children, Youth & Families	MHS - Family Recovery Center 1100 Sportfisher Dr. Oceanside, CA 92054	(760) 439-6702	24/7 (Office Hours 9:00 am - 4:00 pm Mon - Fri)	North Coastal	Adult Women, including those who are pregnant or have children.			Women's long term residential alcohol and other drug treatment and recovery services for women and their children. Free child care available on-site.
AOD Residential Program Children, Youth & Families	Phoenix House Academy of San Diego 23981 Sherilton Valley Rd Descanso, CA 91916	(619) 445-0405	24/7	East	Adolescents		Requirements met	A residential treatment program for adolescent drug and alcohol abusers. Offers a full-time school program, recreational and fitness programs, and family and group therapy. Residential program lasts 12 months.
AOD Sobering Services	Inebriate Reception Center (IRC) Volunteers of America (VOA) 101 16th St. San Diego, CA 92101	(619) 232-9343	24/7	Central	Adults, Older Adults	Spanish	Requirements met	Provides a 24-hour sobering center that detains inebriated adults for 4 hours until sober.

Type of Service	Program	Phone	Hours	Region	Populations	Languages	Cultural Competency	Specialties
Assertive Community Treatment	Center Star - ACT Mental Health Systems, Inc. 4283 El Cajon Blvd. Ste. 115 San Diego, CA 92105	(619) 521-1743	Mon - Fri 9:30 am - 4:30 pm	Central	Adults, Older Adults	Spanish	GLBT, HML, Afr Amer, HL	Intensive, all-inclusive Case management, Outpatient & Rehabilitation, with supported employment through justice system.
Assertive Community Treatment	Downtown IMPACT Community Research Foundation 995 Gateway Center Way Ste. 300 San Diego, CA 92102	(619) 398-2156	Mon - Fri 8:30 am - 4:30 pm	Central	Adults, age 18+ (high-risk homeless in downtown San Diego)	Spanish	Older Adult, GLBT, HML, Afr Amer, HL	Intensive case management; Medication management; Linkage to services.
Assertive Community Treatment	IMPACT Community Research Foundation 1260 Morena Blvd. Ste. 100 San Diego, CA 92110	(619) 398-0355	Mon - Fri 8:30 am - 4:30 pm	Central, North Central	Adults, ages 25-59	Spanish, Tagalog	Older Adult, HML, Afr Amer, Filipinos, Latinos, Asian populations, HL	Medication management; Crisis intervention; Case management; Socialization; Vocational services.

Type of Service	Program	Phone	Hours	Region	Populations	Languages	Cultural Competency	Specialties
Assertive Community Treatment	North Star - ACT Mental Health Systems, Inc. 474 W. Vermont Ave. Ste. 104 Escondido, CA 92025	(760) 432-9884	Mon - Fri 8:00 - 4:30 pm	North Inland	Adults, Older Adults	Spanish	Older Adult, GLBT, HML, HL, SEA, TAY, ME	Intensive, all-inclusive Case Management, Outpatient & Rehabilitation, with supported employment through justice system.
Assertive Community Treatment	Senior IMPACT Community Research Foundation 995 Gateway Center Way Ste. 302 San Diego, CA 92102	(619) 977-3716	Mon - Fri 8:30 am - 4:30 pm	Countywide	Older Adult (60+)	Spanish, Tagalog, Vietnamese	Older Adult, GLBT, HML	Intensive case management; Medication management; Rehabilitative services; Crisis intervention; Vocational services
Assertive Community Treatment Children, Youth & Families	Providence Community Services - Catalyst Program 3635 Ruffin Rd., Ste. 100 San Diego, CA 92123	(858) 300-0460	Mon - Fri 8:30 am - 5:00 pm (24-hour availability to clients)	Countywide	TAY	Spanish, Tagalog, Arabic	GLBT, HML, Afr Amer, HL, TAY, ME	ACT services including mental health services, case management, housing services, employment and education service, and substance abuse treatment.

Type of Service	Program	Phone	Hours	Region	Populations	Languages	Cultural Competency	Specialties
Case Management	Central San Diego Case Management (AMHS) 1250 Morena Blvd. San Diego, CA 92110	(619) 692-8715	Mon - Fri 8:00 am - 5:00 pm	North Central, Central	Adults and Transition Age Youth	Tagalog, Spanish, French	Older Adult, GLBT, HML, Afr Amer, HL, ME	Mental health services, Case management, and Housing assistance.
Case Management	East County Case Management (AMHS) 1000 Broadway Ste. 100 El Cajon, CA 92021	(619) 401-5424	Mon - Fri 8:00 am - 5:00 pm (*Call for Walk-in Hours)	East	Adults, Older Adults	Polish, Spanish, Russian	Older Adult, GLBT, HML, Afr Amer, HL, AI, SEA, ME	Traditional and institutional (skilled nursing home and IMD); Case management.
Case Management	Strengths-based Case Management - North Coastal/North Inland Mental Health Systems, Inc. 474 W. Vermont Ave. Ste. 104 Escondido, CA 92025	(760) 432-9884	Mon - Fri 8:00 am - 4:30 pm (*Call for Walk-in Hours)	North	Adults, Older Adults	Spanish, Farsi, Dari	Older Adult, GLBT, HML, Afr Amer, HL, AI, SEA, ME, TAY	Community-based, traditional case management services to adults and older adults with chronic mental illness.

Type of Service	Program	Phone	Hours	Region	Populations	Languages	Cultural Competency	Specialties
Case Management Children, Youth & Families	Crisis Action and Connection New Alternatives 730 Medical Center Ct. Chula Vista, CA 91911	(619) 591-5740	Mon - Fri 8:30 am - 5:00 pm (After-hours telephone service/consultation available)	Countywide	Children, Adolescents ages 5-18 (with exception up to 21)	Spanish	Bilingual and Bi-cultural staff available GLBT	Comprehensive assessment with Case Management. In-home support services twice a week. Transitional Age Youth, Juvenile Court dependents, GLBT youth
Case Management	Telecare AgeWise 6160 Mission Gorge Road #108, San Diego CA, 92120	(61) 481-5200	Mon-Fri 8:00 am - 5:00 pm	Countywide	Older Adult (60+)	Spanish, Vietnamese, Tagalog	Older Adult, Homelessness, Substance Use, Lived experience with Mental Health issues, Southeast Asian, Hispanic	Strength-based Case Management and Institutional Case Management
Case Management, Intensive Children, Youth & Families	Fred Finch Youth Center Comprehensive Assessment and Stabilization Services (CASS) 3434 Grove St. Lemon Grove, CA 91945	(619) 281-3706	Mon - Fri 8:00 am - 5:00 pm	Countywide	SED Children and Adolescents at risk of change of placement or higher level care	Spanish, Portuguese, American Sign	Hispanic, Latino, Native American, Gay/Lesbian	Early Childhood; Comprehensive assessment; Foster youth; SED Youth; Juvenile Court dependents.

Type of Service	Program	Phone	Hours	Region	Populations	Languages	Cultural Competency	Specialties
Case Management	Strengths-Based Case Management Mental Health Systems, Inc. 474 W. Vermont Ave. Ste. 104 Escondido, CA 92025	(760) 432 - 9884	Mon - Fri 8:00am -4:30pm (*Call for Walk-in Hours)	North Inland	Adults 25 - 59		Adults, LGBT, HML, HL, SEA, TAY, ME	
Clubhouse	Bayview Clubhouse Community Research Foundation 330 Moss St. Chula Vista, CA 91911	(619) 585 - 4646	Mon - Fri 8:00am - 4:00pm	South	Adults, age 18+			
Clubhouse	Casa del Sol Community Research Foundation 1157 30th St. San Diego, CA 92154	(619) 429-1937	Mon 8:30 am - 6:00 pm Tue, Thu, Fri 8:30 am - 4:30 pm Wed 12:00 pm - 8:00 pm	South	Adults, age 18+	Spanish	HML, HL	Volunteer Participation; Vocational; Educational and social support; Self-Help recovery and dual diagnosis groups.

Type of Service	Program	Phone	Hours	Region	Populations	Languages	Cultural Competency	Specialties
Clubhouse	East Corner Clubhouse Community Research Foundation 1060 Estes St. El Cajon, CA 92020	(619) 440-5133	Mon-Fri 8:00am - 4:00pm	East	Adults, age 18+	Spanish,	Older Adult, HML	Vocational training & education, Peer & social support program, Other clubhouse groups & activities.
Clubhouse	Escondido Clubhouse 474 W. Vermont Ave. Ste. 105 Escondido, CA 92025	(760) 737-7125	Mon - Fri 8:00 am - 4:30 pm (1st Sat of the month 10:00 am - 2:00 pm)	North Inland	Adults, age 18+	Spanish	GLBT, Afr Amer, HML	Client-Operated; Social, educational and vocational program.
Clubhouse	Friend to Friend Program Episcopal Community Services 2144 El Cajon Boulevard San Diego, CA 92104	(619) 955-8217	Mon - Fri 8:00 am - 4:00 pm	Central	Adults, age 18+ (persons who are homeless and have a mental illness)	Spanish	Older Adult, Afr Amer, HML, GLBT	Client-Operated; Social, educational and vocational program.

Type of Service	Program	Phone	Hours	Region	Populations	Languages	Cultural Competency	Specialties
Clubhouse	Mariposa Clubhouse 560 Greenbrier Dr. Ste. C-E Oceanside, CA 92054	(760) 439-2785	Mon - Fri 8:00 am - 4:00 pm	North Coastal	Adults, age 18+		GLBT, Afr Amer, HML	Client-Operated; social, educational and vocational program.
Clubhouse	NHA Friendship Clubhouse Project Enable 286 Euclid Ave. Ste. 104 San Diego, CA 92114	(619) 263-6269	Mon - Fri 8:30 am - 5:30 pm	Central	Adults, age 18+	Spanish	HML, Afr Amer, African Refugee	Socialization and Independent Living Skills.
Clubhouse	Oasis Clubhouse Providence Community Services 3635 Ruffin Rd, Ste. 100 San Diego, CA 92123	(858) 300-0460	Mon - Fri 8:30 am - 5:00 pm	Countywide	TAY	Spanish, Tagalog, Arabic, and Interpreter Services for all languages	GLBT, Afr Amer, HL, TAY, ME	Socialization and Independent Living skills.

Type of Service	Program	Phone	Hours	Region	Populations	Languages	Cultural Competency	Specialties
Clubhouse	The Corner Clubhouse 2864 University Ave. San Diego, CA 92104	(619) 683-7423	Mon - Fri 8:00 am - 4:00 pm	Central	Adults, age 18+	German	Older Adult, Afr Amer, HL, AI, TAY,	Volunteer participation; Vocational, educational and social support; Self-help, recovery, and co-occurring disorders groups.
Clubhouse	The Meeting Place 2553 State St. San Diego, CA 92101	(619) 294-9582	Mon - Fri 8:00 am - 4:00 pm Sat (rotating) 10:00 am - 2:00 pm	Central	Adults, Older Adults	Limited Spanish	Older Adult, GLBT, Afr Amer	Socialization; Vocational services Under 30 support group
Clubhouse	Visions 226 Church Ave. Chula Vista, CA 91910	(619) 420-8603	Mon - Fri 12:00 pm - 7:00 pm Sat, Sun 12:00 pm - 5:00 pm	South	Adults, age 18+	Spanish, Tagalog	Older Adult, GLBT, HML, Afr Amer, HL, AI, SEA	Socialization; Education, and Vocational Services

Type of Service	Program	Phone	Hours	Region	Populations	Languages	Cultural Competency	Specialties
Crisis Hotline and Behavioral Health Access	Access and Crisis Line (ACL)	(888) 724-7240 TTY (619) 641-6992	24/7	Countywide	All Ages	All	All	Telephone crisis intervention; Suicide prevention; Behavioral health information and referrals. Staffed by mental health professionals.
Crisis Services	Halcyon Center 1664 E. Broadway El Cajon, CA 92021	(619) 579-8685	24/7	Countywide	Adults, Older Adults		GLBT, HML, Afr Amer, HL	Short-Term Acute Residential Treatment (START).
Crisis Services	Isis Crisis Center 892 27th St. San Diego, CA 92154	(619) 575-4687	24/7	Countywide	Adults, Older Adults	Spanish, French, Arabic, Indonesian	HL	Short-Term Acute Residential Treatment (START).

Type of Service	Program	Phone	Hours	Region	Populations	Languages	Cultural Competency	Specialties
Crisis Services	Jary Barreto Crisis Center 2865 Logan Ave. San Diego, CA 92113	(619) 232-4357	24/7	Countywide	Adults, Older Adults		GLBT, Afr Amer, HL	Short-Term Acute Residential Treatment (START).
Crisis Services	New Vistas Crisis Center 734 Tenth Ave. San Diego, CA 92101	(619) 239-4663	24/7	Countywide	Adults, Older Adults	Vietnamese, Japanese, Russian, Spanish, Italian, Chinese	Older Adult, GLBT, HML, Afr Amer, EE, HL, SEA, ME, AI	Short-Term Acute Residential Treatment (START).
Crisis Services	Psychiatric Emergency Response Team (PERT)	(619) 276-8112 Administrative office only. CALL YOUR LOCAL LAW ENFORCEMENT AGENCY FOR IMMEDIATE	Mon - Fri 9:00 am - 5:00 am Administrative office only. (Hours vary depending on need. No in-service location.)	Central	All Ages	Spanish, French, Tagalog, and unlimited access to over 100 interpreters through police and sheriff, including sign language	Older Adult, GLBT, HML, Afr Amer, HL, AI, SEA, EE, ME	Emergency mental health assessment accompanying police.

Type of Service	Program	Phone	Hours	Region	Populations	Languages	Cultural Competency	Specialties
Crisis Services	San Diego County Psychiatric Hospital Emergency Psychiatric Unit 3853 Rosecrans St. San Diego, CA 92110	(619) 692-8200	24/7	Countywide	Adults, Older Adults	Spanish		Emergency mental health assessment and referrals.
Crisis Services	Turning Point Crisis Center 1738 S. Tremont St. Oceanside, CA 92054	(760) 439-2800	24/7	Countywide	Adults, Older Adults		Older Adult, GLBT, HML, Afr Amer, HL, ME	Short-Term Acute Residential Treatment (START).
Crisis Services	Vista Balboa START Program 545 Laurel St. San Diego, CA 92101	(619) 233-4399	24/7	Countywide	Adults, Older Adults	Spanish	GLBT, Afr Amer	Short-Term Acute Residential Treatment (START)

Type of Service	Program	Phone	Hours	Region	Populations	Languages	Cultural Competency	Specialties
Crisis Services Children, Youth & Families	Rady Children's Behavioral Crisis Center 3605 Vista Way Ste. 258 Oceanside, CA 92056	(760) 730-5900	Mon - Fri 12:00 pm - 8:00 pm	North Coastal, North Inland	Children, Adolescents Underserved, Uninsured and Underserved SED	Spanish	Mexican American and Other Latin American, GLBT	Youth to age 17 requiring immediate mental health services. Mobile Psychiatric Emergency Response; Walk-in Clinic.
Crisis Services Children, Youth & Families	Emergency Screening Unit 730 Medical Center Ct. Chula Vista, CA 91911	(619) 397-6901	24/7	Countywide	Children, Adolescents			All psychiatric emergencies are seen.
Day Program Children, Youth & Families	Casa de Amparo Day Rehabilitation 325 Buena Creek Rd. San Marcos, CA 92069	(760) 754-5500	Mon - Fri 8:30 pm - 5:00 pm	Countywide	Children, Adolescents 6-18, juvenile court dependents placed in this level 12 crisis residential shelter facility	Spanish, Cantonese, Mandarin	GLBT, Afr Amer, AI, TAY	Juvenile Court dependents.

Type of Service	Program	Phone	Hours	Region	Populations	Languages	Cultural Competency	Specialties
Day Program Children, Youth & Families	San Pasqual Academy 17701 San Pasqual Valley Rd. Escondido, CA 92025	(760) 233-6000	Mon - Fri 8:00 am - 5:30 pm (Residential)	North Inland	TAY, Adolescents (Medi-Cal Eligible) San Pasqual Academy	Spanish	All staff participate in ongoing cultural competency trainings to improve skills in working with our diverse population of young people.	Recreational therapy; Milieu therapy; Group therapy; Full day rehab.
Day Program Children, Youth & Families	San Diego Center for Children Level 14 3004 Armstrong St. San Diego, CA 92111	(858) 277-9550	Mon - Fri 8:00 am - 5:00 pm	Countywide	Children (ages 6-13)	Spanish	Court Dependents, Juvenile Court Wards, Afr Amer, HL, EE, AI	Intensive day treatment of Juvenile Court dependents. Educationally related mental health services.
Day Program Children, Youth & Families	San Diego Center for Children Level 12 3004 Armstrong St. San Diego, CA 92111	(858) 277-9550	Mon - Fri 8:00 am - 5:00 pm	Countywide	Children (ages 6-13)	Spanish	Court Dependents, Juvenile Court Wards, Afr Amer, HL, EE, AI	Intensive day treatment of Juvenile Court dependents, educationally-related mental health services.

Type of Service	Program	Phone	Hours	Region	Populations	Languages	Cultural Competency	Specialties
Day Program Children, Youth & Families	STEPS Mental Health Systems, Inc. Adolescents 4660 Viewridge Ave. San Diego, CA 92123	(858) 565-2510	Mon - Fri 8:00 am - 5:00 pm	Countywide	Adolescents - Sexually Reactive		GLBT, TAY	Juvenile Court dependents and wards; Day treatment (males); Outpatient (males and females).
Day Program (referrals only) Children, Youth & Families	New Alternatives (16) Emergency Screening Unit South Campus 730 Medical Center Ct. Chula Vista, CA 91911	(619) 421-6900 (Court referrals only)	24/7	South	Adolescents (Juvenile Court referrals only)	Spanish	GLBT	Day Treatment; Transitional Age Youth; Children<6; Juvenile Court dependents and wards; LGBT.
Day Program Children, Youth & Families	Fred Finch Youth Center - Day Rehabilitation 3845 Spring Dr. Spring Valley, CA 91977	(619) 797- 1090 (referrals only)	Mon - Fri 8:00 am - 6:00 pm	East	12-17 year olds referred by Child Welfare Services or by San Diego Regional Center			Emotionally Disturbed youth with developmental disability.

Type of Service	Program	Phone	Hours	Region	Populations	Languages	Cultural Competency	Specialties
Day Program Children, Youth & Families	Frontier Learning Assistance Center - Merit Academy 1600 N. Cuyamaca St. El Cajon, CA 92020	(619) 956-0615	Mon - Fri 8:00 am - 4:00 pm	East	Adolescents referred through educationally-related mental health services			Day treatment intensive.
Day Program Children, Youth & Families	Marcy Day Treatment Program San Diego Unified School District 2716 Marcy Ave. San Diego, CA 92113	(619) 525-7372	Mon - Fri 8:30 am - 4:00 pm	Central	Children, Adolescents (ages 9-12) in San Diego Unified School District	Spanish	Provide Spanish parenting groups	San Diego Unified School District / High School Emotionally Disturbed Students.
Day Program Children, Youth & Families	New Alternatives - Cajon Valley School 395 Ballantyne St. #510 El Cajon, CA 92020	(619) 588-3653	Mon - Fri 8:00 am - 4:00 pm	East	Children, Adolescents for children in the Cajon Valley Union School District	Spanish		Kindergarten - 8th grade; Day Rehab; Outpatient.

Type of Service	Program	Phone	Hours	Region	Populations	Languages	Cultural Competency	Specialties
Day Program Children, Youth & Families	New Dawn - Day Treatment San Diego Unified School District 5650 Mt. Ackerly San Diego, CA 92111	(858) 496-1655	Mon - Fri 8:30 am - 4:00 pm	Central	ED(Emotionally Disturbed students (ages 9-12) San Diego Unified School District	Spanish	Provide Spanish parenting groups	Day Rehab; Individual therapy; Medication support services.
Day Program Children, Youth & Families	New Alternatives - Hillcrest Day Rehabilitation 4307 Third Ave. San Diego, CA 92103	(619) 543-0840	Mon - Fri 2:30 pm - 7:30 pm	Countywide	Children, Adolescents	Spanish	Yes	SED; TAY; Children <6; Juvenile Court dependents and wards.
Day Program Children, Youth & Families	Reflections 8376 Hercules St. La Mesa, CA 91942	(619) 667-6891	Mon - Fri 8:00 am - 4:30 pm	Countywide	Adolescents referred by Juvenile Courts	Spanish	Juvenile Court Wards	Family based services; In-home treatment; Support groups.

Type of Service	Program	Phone	Hours	Region	Populations	Languages	Cultural Competency	Specialties
Day Program Children, Youth & Families	Riley Outpatient/ New Dawn School San Diego Unified School District 5650 Mt. Ackerly San Diego, CA 92111	(858) 496-8205	Mon - Fri 8:00 am - 4:30 pm	Central	Adolescents referred through educationally- related mental health services in San Diego Unified School District	Spanish	Provide Spanish parenting groups	Day treatment intensive, educationally related mental health services.
Day Program Children, Youth & Families	San Diego Center for Children Clark Adolescent Treatment Program 3003 Armstrong St. San Diego, CA 92111	(858) 569-2122	Mon - Fri 8:00 am - 5:00 pm	Countywide	Adolescents	Spanish		Day treatment intensive.
Day Program Children, Youth & Families	Unified Day Rehabilitation San Diego Unified School District 5650 Mt. Ackerly Dr. San Diego, CA 92111	(858) 573-2227	Mon-Fri 8:00 am - 4:00 pm	Central	Adolescents			

Type of Service	Program	Phone	Hours	Region	Populations	Languages	Cultural Competency	Specialties
Full-Service Partnership Children, Youth & Families	Counseling Cove San Diego Youth Services 2250 Fourth Ave. Ste. 301 San Diego, CA 92101	(619) 525-9903	Mon - Fri 9:00 am - 6:00 pm (Evening hours by appointment)	Countywide	Homeless, Runaway and SED youth (ages 12-21)	Spanish, Tagalog	HML & Runaway GLBT	Homeless and runaway youth outreach and engagement; Crisis intervention; Outpatient services.
Full-Service Partnership Children, Youth & Families	Fred Finch Wraparound 3434 Grove St. Lemon Grove, CA 91945	(619) 281-3706	Mon-Fri 8:00am-5:00pm (24 hour availability)	Countywide	Children and youth ages 6-21, SED			Court wards/dependents; Intensive case management and mental health services to transition youth to lower level of care; Crisis intervention; Medication management; Individual, group and family therapy.
Full-Service Partnership Children, Youth & Families	Multi-cultural Counseling (MCC) Union of Pan-Asian Communities 5296 University Ave., Ste. F-2 San Diego, CA 92105	(619) 578-2211	Mon - Fri 9:00 am - 6:00 pm (Evening and weekend hours by appointment)	Countywide	Children, Adolescents and their parents	Vietnamese, Tagalog, Spanish, Korean, Burmese	Cultural and linguistic services	Community outreach or Emergency for children who qualify with a serious emotional disturbance.

Type of Service	Program	Phone	Hours	Region	Populations	Languages	Cultural Competency	Specialties
Hospital Inpatient Psychiatric	Alvarado Parkway Institute/ Behavioral Health System 7050 Parkway Dr. La Mesa, CA 91942	(619) 465-4411	24/7	East	Adult, Older Adult	Spanish, Tagalog	Older Adult, GLBT, HML, Afr Amer, HL, AI, SEA, EE, ME	Acute psychiatric inpatient care; Chemical dependency 24-Hour mobile assessment.
Hospital Inpatient Psychiatric	Palomar Medical Center Mental Health Unit 555 E. Valley Pkwy. Escondido, CA 92025	(760) 739-3240	24/7	North Inland	Adults, Older Adults	All	Older Adult, GLBT, HML, Afr Amer, HL, AI, African Refugee, SEA, EE, ME	Acute psychiatric inpatient care.
Hospital Inpatient Psychiatric	Pomerado Hospital Behavioral Medicine Center 15615 Pomerado Rd. Poway, CA 92064	(858) 613-5640	24/7	North Central	Adults, Older Adults	All	Older Adult, GLBT, HML, Afr Amer, HL, AI, African Refugee, SEA, EE, ME	Acute psychiatric inpatient care.

Type of Service	Program	Phone	Hours	Region	Populations	Languages	Cultural Competency	Specialties
Hospital Inpatient Psychiatric	PRIME Paradise Valley Hospital Psychiatric Services 2400 E. 4th St. National City, CA 91950	(619) 470-4239	24/7	South	Adults	Spanish, Tagalog	Older Adult, GLBT, HML, Afr Amer, HL, AI, African Refugee, SEA, EE, ME	Acute psychiatric inpatient care.
Hospital Inpatient Psychiatric	PRIME Bayview Behavioral Health Campus 330 Moss St. Chula Vista, CA 91911	(619) 426-6310 Intake: (800) 585-4620 Partial Hospitalization: (619) 585-4618	24/7	South	Adults	Spanish, Tagalog	Older Adult, GLBT, HML, Afr Amer, HL, AI, African Refugee, SEA, EE, ME	Acute psychiatric inpatient care.
Hospital Inpatient Psychiatric	Promise Hospital 5550 University Ave. San Diego, CA 92105	(619) 582-3516	24/7	Central	Adults, Older Adults	Spanish, Tagalog, Vietnamese, Somalian	Older Adult, GLBT, HML, Afr Amer, HL, African Refugee, SEA	Acute psychiatric inpatient care.

Type of Service	Program	Phone	Hours	Region	Populations	Languages	Cultural Competency	Specialties
Hospital Inpatient Psychiatric	San Diego County Psychiatric Hospital 3853 Rosecrans St. San Diego, CA 92110	(619) 692-8200	24/7	Countywide	Adults, Older Adults	Translation Services	Older Adult, GLBT, HML, Afr Amer, HL, AI, African Refugee, SEA, EE, ME	Acute psychiatric inpatient care.
Hospital Inpatient Psychiatric	Scripps Mercy Hospital Behavioral Health 4077 Fifth Ave. San Diego, CA 92103	(619) 260-7005	24/7	Central	Adults, Older Adults	German, Hungarian, Spanish, Chinese, Taiwanese, Tagalog, Nigerian, Portuguese, Arabic, Italian, Cambodian	Older Adult, GLBT, HML, HL, AI, African Refugee	Acute psychiatric inpatient care; Psychiatric assessment.
Hospital Inpatient Psychiatric	Sharp Mesa Vista Hospital 7850 Vista Hill Ave. San Diego, CA 92123	(858) 278-4110	24/7	North Central	All ages	Access to all language translation services	Older Adult, GLBT, HML, Afr Amer, HL, SEA, EE	Acute psychiatric inpatient care.

Type of Service	Program	Phone	Hours	Region	Populations	Languages	Cultural Competency	Specialties
Hospital Inpatient Psychiatric	Sharp Grossmont Hospital Behavioral Health 5555 Grossmont Center Dr. La Mesa, CA 91942	Intake (800) 696-6899 Open Unit (619) 740-4802	24/7	East	Adults, Older Adults	Spanish, Tagalog, American Sign	Older Adult, GLBT, HML, Afr Amer, HL, AI, ME	Acute psychiatric inpatient care.
Hospital Inpatient Psychiatric	Tri-City Medical Center 4002 Vista Way Oceanside, CA 92056	(760) 940-7396 ER: (760) 940-3505	24/7	North Coastal	Adults, Older Adults (Medicare only)	Spanish		Acute psychiatric inpatient care.
Hospital Inpatient Psychiatric	UCSD Medical Center Neuropsychiatry and Behavioral Medicine 350 Dickinson St. Ste. 221 San Diego, CA 92103	(619) 543-2827	Mon-Fri 8:00am - 5:00pm	Central	Adults, age 18+	All	All	Acute psychiatric inpatient care.

Type of Service	Program	Phone	Hours	Region	Populations	Languages	Cultural Competency	Specialties
Hospital Inpatient Psychiatric Children, Youth & Families	Aurora Behavioral Health Care - San Diego 11878 Avenue of Industry San Diego, CA 92128	(858) 487-3200	24/7	North Inland	Children, youth	Spanish, Tagalog, Chinese	Afr Amer, HL, AI, GLBT	Acute psychiatric inpatient care.
Hospital Inpatient Psychiatric Children, Youth & Families	Rady Child and Adolescent Psychiatry Services (CAPS) 8001 Frost St. San Diego, CA 92123	(619) 229-3700	24/7	Countywide	Children, Adolescents	Spanish		Acute psychiatric inpatient care.
Innovation Children, Youth & Families	After-School Inclusion YMCA 4080 Centre St. Ste. 103 San Diego, CA 92103	(619) 543-9850	Mon - Fri 8:30 am - 5:00 pm	Countywide	Children, elementary school age		English	Provides YMCA after-school program inclusion aide support; case management.

Type of Service	Program	Phone	Hours	Region	Populations	Languages	Cultural Competency	Specialties
Juvenile Forensic Services Children, Youth & Families	County of San Diego Girls' Rehabilitation Facility STAT Team Mental Health Services 2861 Meadow Lark Dr. San Diego, CA 92123	(858) 694-4510	24/7	Countywide	Delinquent girls		Juvenile Court Wards	Delinquent girls committed by the court.
Juvenile Forensic Services Children, Youth & Families	County of San Diego Juvenile Forensic Services STAT Team 2801 Meadow Lark Dr. San Diego, CA 92123	(858) 694-4752	Mon - Fri 8:00 am - 5:00 pm	Countywide	Children, Adolescents detained in Juvenile Hall		Juvenile Court Wards	Crisis Intervention; Counseling; Medical evaluations; Brief assessment and consultation.
Juvenile Forensic Services Children, Youth & Families	San Diego Center for Children Multi-Dimensional Treatment Foster Care (MTFC), P-Program 3002 Armstrong St. San Diego, CA 92111	(858) 277-9550	Mon - Fri 8:00 am - 5:00 pm	Countywide	Children ages 3-6 identified by Child Welfare Services (referrals only)		Under 6, Juvenile Court Dependents and Wards	Community/home-based intensive treatment foster care.

Type of Service	Program	Phone	Hours	Region	Populations	Languages	Cultural Competency	Specialties
Juvenile Forensic Services Children, Youth & Families	County of San Diego Polinsky Children's Center STAT Team 9400 Ruffin Ct. San Diego, CA 92123	(858) 874-1059	Mon - Fri 8:00 am - 9:00 pm Sat Hours vary Sun 9:00 am - 7:00 pm	Countywide	Dependent Children and Adolescents detained in shelter care at Polinsky Center	Spanish, German, Romanian, Hebrew	Juvenile Court Dependents and Wards	Mental health services; Crisis intervention.
Juvenile Forensic Services Children, Youth & Families	Juvenile Court Medication Clinic Vista Hill 2851 Meadow Lark Dr. San Diego, CA 92123	(858) 571-1964	Mon - Fri 8:00 am - 5:00 pm (Evenings by appointment)	Countywide	Children, Adolescents	Spanish	HL, Afr Amer	Clinic-based psychiatric assessment; Medication management; Case management; Juvenile Court dependents and wards.
Juvenile Forensic Services (referrals only) Children, Youth & Families	Multi-Systemic Therapy (MST) and Assertive Community Treatment (ACT) San Diego Unified School District 2901 Meadow Lark Dr. San Diego, CA 92123	(619) 225-9621 (Court referrals only)	Mon - Fri 8:00 am - 5:00 pm (Evening hours by appointment)	Countywide	San Diego Unified School District students who have been detained at the Kearny Mesa Juvenile Detention Facility (Superior Court referrals only)			Home-based Multi-Systemic Therapy (MST) and Assertive Community Treatment (ACT) which require family participation.

Type of Service	Program	Phone	Hours	Region	Populations	Languages	Cultural Competency	Specialties
Juvenile Forensic Services (referrals only) Children, Youth & Families	Multi-Dimensional Treatment Foster Care (MTFC), C-Program San Diego Youth Services 3255 Wing St. San Diego, CA 92110	(619) 221-8600 (referrals only)	Mon - Fri 8:30 am - 5:00 pm	Countywide	Children ages 7-12 (Child Welfare Services referrals only)			Community/home-based intensive treatment foster care.
Other CalWORKs	CalWORKs - Escondido Mental Health Systems, Inc. 474 W. Vermont Ave. Ste. 103 Escondido, CA 92025	(760) 745-0281 (referrals only)	Mon - Fri 9:00 am - 4:00 pm	North Inland	Adult, Older Adults (referrals only)	Spanish	GLBT, Afr Amer, HL	Multi-Service Center for CalWORKs WTW participants; mental health and dual disorders counseling services.
Other CalWORKs	CalWORKs - East Mental Health Systems, Inc. 900 N. Cuyamaca St, Ste. 110 El Cajon, CA 92020	(619) 448-0420 (referrals only)	Mon - Fri 9:00 am - 4:00 pm	East	Adult, Older Adults (referrals only)	Spanish, French, Italian	GLBT, Afr Amer	Multi-Service Center for CalWORKs WTW participants; mental health and dual disorders counseling services.

Type of Service	Program	Phone	Hours	Region	Populations	Languages	Cultural Competency	Specialties
Other CalWORKs	STEPForward 2772 Fourth Ave. San Diego, CA 92103	(619) 295-6067	Mon - Fri 8:00 am - 5:00 pm	Central	CalWORKs Recipients	Spanish, Somali, Cambodian, Vietnamese		Individual therapy; Case management; Medication management.
Other CalWORKs (referrals only)	CalWORKs - South Mental Health Systems, Inc. 1105 Broadway Ste. 207 Chula Vista, CA 91911	(619) 425- 5609 (referrals only)	Mon - Fri 8:00 am - 4:30 pm	South	Adults, Older Adults (referrals only)	Spanish	GLBT, Afr Amer, HL	Multi-Service Center for CalWORKs WTW participants; Mental health and dual disorders counseling services.
Other CalWORKs (referrals only)	CalWORKs - Oceanside Mental Health Systems, Inc. 1919 Apple St. Stes. A & B Oceanside, CA 92054	(760) 439- 4577 (referrals only)	Mon - Fri 9:00 am - 4:00 pm	North Coastal	Adults, Older Adults (referrals only)	Spanish, Italian, German, Portuguese	GLBT, Afr Amer, HL	Multi-Service Center for CalWORKs WTW participants; mental health and dual disorders counseling services.

Type of Service	Program	Phone	Hours	Region	Populations	Languages	Cultural Competency	Specialties
Other Conservator Services	Public Administrator/Public Guardian 5560 Overland Ave, Suite 130 San Diego, CA 92123	858-694-3500	Mon - Fri 8:00 am - 5:00 pm	Countywide	All ages	Vietnamese, French, Tagalog	Older Adult, GLBT, HML, SEA	Investigation and related services.
Other Employment Services	Employment Services Mental Health Systems, Inc. 1202 Morena Blvd. Ste. 201 San Diego, CA 92110	(619) 276-8071	Mon - Fri 8:00 am - 4:30 pm	Countywide	Adults, age 18+	Spanish, TTD for hearing impaired	Physically Disabled, Older Adult, GLBT, HML, Afr Amer, HL, AI, African Refugee, SEA, ME	Vocational readiness, job placement and support for clients who qualify for Dept. of Rehab and who receive County mental health services.
Other Employment Services	San Diego Employment Solutions Mental Health Systems, Inc. 10981 San Diego Mission Rd. Ste. 110 San Diego, CA 92108	(619) 521-9569	Mon - Fri 8:00 am - 4:30 pm	North Central, Central	Adults, age 18+	Spanish and Asian languages	Older Adult, GLBT, HML, Afr Amer, HL, ME	Individual job placement and support to the severely mentally ill.

Type of Service	Program	Phone	Hours	Region	Populations	Languages	Cultural Competency	Specialties
Other Forensic Adult	Forensic Evaluation Psychiatry Unit 220 W. Broadway Room 1003 San Diego, CA 92101	(619) 531-3047 (Court referrals only)	Mon - Fri 8:00 am - 4:30 pm	Central	Adults, Older Adults referred by Court		All	Court-ordered mental health assessments.
Other Forensics Adult	Conditional Release Program (CONREP) Address Confidential	Confidential		Countywide	Adults (Judicially committed patients and mentally disordered offenders)	Interpreter Services	Older Adult, GLBT, Afr Amer, HL	Medication management; Crisis intervention.
Other Jail	Central Detention Facility (Men's Psychiatric Security Unit) 1173 Front St. San Diego, CA 92101	(619) 615-2599	24/7	Countywide	Adults, Male Inmates	Spanish		Psychiatric unit and services.

Type of Service	Program	Phone	Hours	Region	Populations	Languages	Cultural Competency	Specialties
Other Jail	George Bailey Detention Facility (Men's Clinic Only) Ste. 5300 446 Alta Rd. San Diego, CA 92158	(619) 661-2620	24/7	South	Adults, Male Inmates	Spanish	All	Mental health treatment to incarcerated.
Other Jail	Las Colinas Detention Facility (Women's Psychiatric Security) 9000 Cottonwood Ave. Santee, CA 92071	(619) 258-3176	24/7	Countywide	Adults, Female Inmates		All	Inpatient and outpatient psychiatric services.
Other Jail	Vista Detention Facility (Men's/Women's Clinics) 325 S. Melrose Ste. 200 Vista, CA 92081	(760) 940-4473	24/7	North Coastal	Adult, Male and Female Inmates	Spanish		

Type of Service	Program	Phone	Hours	Region	Populations	Languages	Cultural Competency	Specialties
Other Outreach	Aging & Independence Services	(800) 510-2020 APS Hotline open 24/7	Office: Mon - Fri 8:00 am - 5:00 pm; APS Hotline open 24/7	Countywide	Older Adults	Available connection to offsite interpreters.	Older Adult	In-Home crisis intervention; Short-term case management.
Outpatient	BPSR Kinesis North (Ramona Satellite)	(760) 480-2255	Mon 9:00 am - 3:00 pm	North Inland	Adults, Older Adults	Italian, German, Spanish, Portuguese	HML, GLBT, Afr Amer, EE, TAY	Medication management; Individual and group therapy; Rehabilitation; Co-occurring disorders.
Outpatient	BPSR - Vista Mental Health Systems, Inc. 550 W. Vista Way Ste. 407 Vista, CA 92083	(760) 758-1092	Mon - Fri 8:30 am - 5:00 pm	North Inland	Adults, Older Adults, TAY	Spanish	Older Adult, GLBT, HML, Afr Amer, HL, African Refugee, SEA, EE, ME	Medication management; Crisis intervention.

Type of Service	Program	Phone	Hours	Region	Populations	Languages	Cultural Competency	Specialties
Outpatient	BPSR - Kinesis North 474 W. Vermont Ave. Ste. 101 Escondido, CA 92025	(760) 480-2255	Mon - Fri 8:00 am - 5:00 pm	North Inland	Adults, Older Adults, TAY	Spanish, Italian, German, Portuguese	HML, GLBT, Afr Amer, EE, TAY	Medication management; Crisis intervention; Socialization.
Outpatient	BPSR Center Areta Crowell 1963 Fourth Ave. San Diego, CA 92101	(619) 233-3432	Mon - Fri 8:30 am - 5:00 pm	Central	TAY, Adults, Older Adults	Spanish, Vietnamese, Tagalog	HML, TAY, GLBT	Medication management; Crisis intervention; Case management; Group and individual rehabilitative services; Housing assistance.
Outpatient	BPSR - Kinesis North (Fallbrook Satellite) 1328 S. Mission Fallbrook, CA 92028	(760) 480-2255	Every other Fri 9:00 am - 3:00 pm	North Inland	Adults, Older Adults	Italian, German, Spanish, Portuguese	HML, GLBT, Afr Amer, EE, TAY	Individual and group therapy; Medication management; Rehabilitation; Co- occurring disorders.

Type of Service	Program	Phone	Hours	Region	Populations	Languages	Cultural Competency	Specialties
Outpatient	Center for Counseling Catholic Charities 349 Cedar St. San Diego, CA 92101	(619) 231-2828 Ext. 306	Mon - Fri 8:00 am - 5:00 pm (Evening hours by appointment)	Central	Adults, Collateral Family Members	Spanish, Polish, Italian, French	Older Adult, GLBT, HML, Afr Amer, HL, EE, ME	Mental Health.
Outpatient	Chaldean - Middle Eastern Social Services 436 S. Magnolia Ave. Ste. 201 El Cajon, CA 92020	(619) 631-7400	Mon - Fri 9:00 am - 5:00 pm	East	All Ages	Arabic	Middle Eastern Refugees	Mental health services for refugees.
Outpatient	Co-Occurring Disorders Program University of California San Diego (UCSD) 140 Arbor Dr. San Diego, CA 92103	(619) 543-7625	Mon - Thu 8:00 am - 6:00 pm Fri 8:00 pm - 5:00 pm	Central	Adults, Older Adults	Spanish, Italian	Older Adult, GLBT, HML, Afr Amer, HL, AI, African Refugee, SEA, EE, ME	Medication management; Crisis intervention; Recovery counseling.

Type of Service	Program	Phone	Hours	Region	Populations	Languages	Cultural Competency	Specialties
Outpatient	Community Circle Central Family Health Centers of San Diego 2204 National Ave. San Diego, CA 92113	(619) 798-3638	Mon - Fri 8:30 am - 5:00 pm	Central	Children, Adolescents, Adults	Spanish, Japanese	Spanish, Translational services available for Tagalog, Vietnamese, Laotian, Arabic	Individual, child, adolescent, family therapy; School-based services
Outpatient	Counseling and Treatment Center Union of Pan Asian Communities (UPAC) 5348 University Ave. Ste. 101 San Diego, CA 92105	(619) 229-2999	Mon, Wed, Thu, Fri 8:30 am - 5:00 pm Tue 8:30 am - 6:00 pm	Central	Adults, Older Adults	Vietnamese, Cambodian, Laotian, Tagalog, Cantonese, Korean, Thai, Hmong	Older Adult, SEA	Medication management; Crisis intervention.
Outpatient	Deaf Community Services of San Diego 3930 Fourth Ave. Ste. 300 San Diego, CA 92103	(619) 398-2441 TTY: (619) 398-2440 VP: (619) 550-3436	Mon - Fri 8:30 am - 5:00 pm	Central	Adults, Older Adults	American Sign, Spanish, Tagalog	Older Adult, GLBT, HML, Afr Amer, HL, AI, SEA	Community services.

Type of Service	Program	Phone	Hours	Region	Populations	Languages	Cultural Competency	Specialties
Outpatient	Douglas Young BPSR Center Community Research Foundation 10717 Camino Ruiz Ste. 207 San Diego, CA 92126	(858) 695-2211	Mon, Tue, Fri 9:00 am - 5:00 pm Wed 9:00am - 5:00pm Thu 12:00 pm - 8:00 pm	North Central, Central	TAY, Adults, Older Adults Filipinos	Spanish, Tagalog	Dual Diagnosis, HL, SEA, EE, ME, TAY,API,Older Adult	Medication management; Crisis intervention; Group and individual rehabilitation services; Geriatric specialty services; AB109.
Outpatient	East County Mental Health Center 1000 Broadway Ste. 210 El Cajon, CA 92021	(619) 401-5500	Mon - Thu 8:00 am - 12:00 pm 1:00pm -6:00pm Fri 8:00 am - 12:00 pm 1:00pm - 5:00pm (Call for Walk-in Hours)	East	Adults, Older Adults	Spanish, Tagalog, Arabic, Aramaic, Farsi, Tigrinya, Amharic, Italian	Older Adult, GLBT, HML, Afr Amer, HL, AI, African Refugee, ME	Dually-Diagnosed Individual and group rehabilitation services; Medication management; Case management; Crisis Intervention.
Outpatient	East Wind Socialization Center Union of Pan Asian Communities (UPAC) 8745 Aero Dr. Ste. 330 San Diego, CA 92123	(858) 268-4933	Mon - Fri 8:30 am - 5:00 pm	North Central	Adults, Older Adults	Vietnamese, Hmong, Cambodian, Cantonese, Chinese, Korean	Older Adult, GLBT, SEA	Medication management; Crisis intervention; Socialization Clubhouse.

Type of Service	Program	Phone	Hours	Region	Populations	Languages	Cultural Competency	Specialties
Outpatient	Gifford Clinic Outpatient Psychiatric Services University of California San Diego (UCSD) 140 Arbor Dr. San Diego, CA 92103	(619) 543-6250	Mon - Fri 8:00 am - 5:00 pm	Central	Adults, Older Adults	Spanish, Russian, Portuguese, Hindi, French, German	Older Adult, GLBT, HML, Afr Amer, HL, AI, SEA, EE	Mental health; Medication management; Crisis intervention; Social Services assistance.
Outpatient	Heartland Wellness and Recovery Center Community Research Foundation 1060 Estes St. El Cajon, CA 92020	(619) 440-5133	Mon,Tue,Thur,Fri 9:00 am - 5:00 pm Wed 9:00am - 7:00pm	East	Adults, age 18+	Spanish	Older Adult, GLBT, HML, HL, AI	Medication management; Crisis intervention; Case management; Socialization; Vocational services, Group and Individual Rehabilitation Services, Geriatric Specialty Services, and AB109.
Outpatient	I-CARE (Integrated Care Resources) Family Health Centers of San Diego 823 Gateway Center Way San Diego, CA 92102	(619) 515-2300	Mon - Fri 8:00am - 5:00pm	Central	Adults	Spanish	Requirements met	Depression care managers at various community health clinics use the IMPACT model to work with clients in alleviating symptoms and learning to cope with life challenges.

Type of Service	Program	Phone	Hours	Region	Populations	Languages	Cultural Competency	Specialties
Outpatient	Jane Westin Center 1045 Ninth Ave. San Diego, CA 92101	(619) 235-2600	Mon - Fri 10:00 am - 4:00 pm	Countywide	Adults, Older Adults	Spanish, Serbian, Croatian	Older Adult, HML, HL	Short term outpatient clinical stabilization transitioning to other long term outpatient providers.
Outpatient	Maria Sardinas Wellness & Recovery Center 1465 30th St. Ste. K San Diego, CA 92154	(619) 428-1000	Mon, Wed 9:00 am - 8:00 pm Tue, Thu, Fri 9:00 am - 5:00 pm (*Call for hours)	South	Adults, age 18+, Latino	Spanish	TAY	DBT and depression groups for Latino program; Mobile services.
Outpatient	North Central Mental Health Center 1250 Morena Blvd. San Diego, CA 92110	(619) 692-8750	Mon - Fri 8:00 am - 5:00 pm (Call for Walk-in Hours. Evening hours by appointment)	North Central	Adults, age 18+	Farsi, Spanish, Tagalog,	Older Adult, GLBT, HML, Afr Amer, HL, SEA, ME	Mental health rehabilitation services; Medication management; Case management; Crisis intervention; Vocational services.

Type of Service	Program	Phone	Hours	Region	Populations	Languages	Cultural Competency	Specialties
Outpatient	North Inland Mental Health Center (AMHS) 125 W. Mission Ave. Ste. 103 Escondido, CA 92025	(760) 747-3424	Mon and Fri 9:00 am - 5:00 pm Tues-Thur 9:00am - 7:00pm (*Call for Walk-in Hours)	North Inland	Adults, Older Adults	Spanish	Older Adult, GLBT, HML, HL, SEA, TAY, ME	Medication management; Rehabilitation and Recovery; Mental health; Crisis intervention.
Outpatient	North Coastal Mental Health Center 1701 Mission Ave. Ste. A Oceanside, CA 92058	(760) 967-4475	Mon - Fri 8:00 am - 5:00 pm (*Call for Walk-in Hours)	North Coastal	Adults, Older Adults, TAY	Spanish, Farsi, Cape Verdean, Russian, Arabic, Korean, French	Older Adult, HML, GLBT, Aramaic, HL, SEA, ME, TAY	Medication management; Rehabilitation and Recovery; Mental health; Crisis intervention.
Outpatient	Owen Clinic University of California San Diego (UCSD) 4168 Front St. 3rd Floor San Diego, CA 92103	(619)543-3995	Mon - Fri 8:00 am - 5:00 pm	Central	Adults, Older Adults, HIV+ and AIDS	Spanish	Older Adult, GLBT, HML, Afr Amer, HL, AI, African Refugee, SEA, EE, ME	Mental Health; Medication Management; Crisis intervention to clinic's patients.

Type of Service	Program	Phone	Hours	Region	Populations	Languages	Cultural Competency	Specialties
Outpatient	Project Enable 286 Euclid Ave. Ste. 102 San Diego, CA 92114	(619) 266-2111 Ext. 113 (619) 263-6155 Ext. 113	Mon - Fri 8:00 am - 5:00 pm	Central	Adults, Older Adults	Spanish, Tagalog, Ethiopian, Access to interpreters	Older Adult, GLBT, Latino, Afr Amer, TAY	Mental Health Services, Medication management; Crisis intervention; Vocational; Clubhouse.
Outpatient	Rady Children's Outpatient Psychiatry - North Inland Clinic 625 W. Citracado Pkwy. Ste. 102 Escondido, CA 92025	(760) 294-9270	Mon - Fri 8:00am - 5:00pm	North Inland	Medi-Cal and MHSA funded	Spanish	English-speaking and Latino families	Individual, group and family therapy; Case management; Medication management.
Outpatient	San Diego Deaf Mental Health Services National Center for Deaf Advocacy 10765 Woodside Ave. Ste. B Santee, CA 92071	(619) 456-9609 Videophone: (619) 272-4295	Mon - Fri 9:00 am - 5:00 pm	Countywide	All Ages	American Sign, Spanish	Deaf and Hard of Hearing / Disabled	Outpatient mental health clinic Individual and family therapy; Crisis intervention; Case management; Co-occurring disorder services.

Type of Service	Program	Phone	Hours	Region	Populations	Languages	Cultural Competency	Specialties
Outpatient	Southeast Mental Health Center 3177 Ocean View Blvd. San Diego, CA 92113	(619) 595-4400	Mon - Fri 8:00 am - 5:00 pm	Central	All Ages	Spanish, Farsi, Tagalog	Adults, Older Adult, HML, Afr Amer, HL, Under 6, Juvenile Court Dependents, TAY	Medication Management; Dual diagnosis treatment; Crisis intervention; School liaison; Individual, group and family therapy.
Outpatient	Survivors of Torture PO Box 151240 San Diego, CA 92175	(619) 278-2400	Mon - Fri 8:00 am - 5:00 pm	Countywide	All Ages	Serves 130 languages	All areas for survivors of politically-motivated torture	For the healing of torture survivors and their families; Educate on torture, its consequences; Advocate for the abolition of torture.
Outpatient	Walk-In Assessment Center Exodus Recovery Vista Mental Health 524 W. Vista Way Vista, CA 92083	(760) 758-1150	Mon - Fri 11:00 pm - 6:30 pm (Call for Walk-in Hours)	North Coastal	TAY, Adults, Older Adults	Spanish	Older Adult, GLBT, Afr Amer, HL, AI, SEA, and EE	One time or short term urgent and crisis mental health services including assessments, medication evaluations; also limited caseload of ongoing treatment services.

Type of Service	Program	Phone	Hours	Region	Populations	Languages	Cultural Competency	Specialties
Outpatient	Walk-in Assessment Center Exodus Recovery Escondido Mental Health 660 E. Grand Avenue Escondido, CA 92025	(760) 796 - 7760	Mon - Fri 11:00am-6:30pm (Call for Walk-in Hours)	North Inland				
Outpatient	Wellness & Recovery Center South Bay Guidance 835 Third Ave. Ste. C Chula Vista, CA 91911	(619) 427-4661	Mon 9:00 am - 8:00pm Tue, Wed, Fri 9:00 am - 5:00 pm Thu 12:00 pm - 8:00 pm (*Call for Walk-in Hours)	South	Adults, age 18+	Spanish	Older Adult, HL, Dual Diagnosis	Medication Management; Crisis intervention; Rehab services; FSP case management; Group and individual counseling; Employment services.
Outpatient Children, Youth & Families	Community Circle East Spring Valley Elementary Counseling Center Family Health Centers 3845 Spring Dr. Spring Valley, CA 91977	(619) 515-2380	Mon - Fri 8:30 am - 5:00 pm	East	Children, Adolescents, Adults	Spanish, Japanese	Spanish, Translational services available for Tagalog, Vietnamese, Laotian, Arabic	Individual, child, adolescent, family therapy; School-based services.

Type of Service	Program	Phone	Hours	Region	Populations	Languages	Cultural Competency	Specialties
Outpatient Children, Youth & Families	Incredible Families 4990 Williams Ave La Mesa, CA 91941	(619) 668-4200	Mon - Fri 8:30 am - 5:00 pm	Countywide	Juvenile Court dependent children (ages 0-11)			Provides brief mental health services based on the Incredible Years model - includes Basic Parent Group Training.
Outpatient Children, Youth & Families	Mobile Adolescent Services Team (MAST) Community Research Foundation 1202 Morena Blvd. Ste. 203 San Diego, CA 92110	(619) 398-3261	Mon - Fri 8:00 am - 5:00 pm	Countywide	Children, Adolescents Medi-Cal eligible or no other form of insurance	Spanish	Latino, Youth, HML, Gang Involved	At-Risk Youth - Homeless youth enrolled at Monarch school - Pregnant teens/teen mothers.
Outpatient Children, Youth & Families	CAT-YAR Program South Bay Community Services 430 F St. Chula Vista, CA 91910	(619) 420-3620	Mon - Thur 8:30am - 8:00pm Fri 8:30am - 5:00pm	South	At -risk youth ages 8-18 CAT-YAR only	Spanish	HL	CAT-YAR provides juvenile delinquency and prevention services.

Type of Service	Program	Phone	Hours	Region	Populations	Languages	Cultural Competency	Specialties
Outpatient Children, Youth & Families	CAT-YAR San Diego Youth Services 3845 Spring St. La Mesa, CA 91941	(619) 258-6877	Mon - Fri 8:30am - 6:00pm	East	At-risk youth ages 8-18	Spanish		Juvenile delinquency prevention and diversion services provided at clinic, in home or at school.
Outpatient Children, Youth & Families	Central School-Based Program Mental Health Systems, Inc. 4660 Viewridge Ave. San Diego, CA 92123	(858) 278-3292	Mon - Fri 8:30 am - 5:00 pm	Central	Under 5, Children, Adolescents, Medi-Cal and MHSA eligible	Spanish; The program also utilizes Bilingual services and interpreters available	Afr Amer, Asian, Hispanic, Latino, Native American	Children, Adolescents; Family dynamics; Homeless; Juvenile Court dependents; Substance abuse issues; Therapy; Case management.
Outpatient Children, Youth & Families	Child and Adolescent Mental Health Services Union of Pan Asian Communities (UPAC) 1031 25th St. Ste. C San Diego, CA 92102	(619) 232-6454	Mon - Fri 8:30 am - 5:00 pm	Central	Children, Adolescents	Cambodian, French, Indonesian, Dutch, Vietnamese, Hmong, Japanese, Mandarin, Taiwanese, Spanish	Youth GLBT, Under 6, Juvenile Court Dependents, Juvenile Court Wards, SEA, Hispanic Latino	Individual, Group & Family Therapy, Case Management, Mental Health Assessment.

Type of Service	Program	Phone	Hours	Region	Populations	Languages	Cultural Competency	Specialties
Outpatient Children, Youth & Families	Community Clinic Health Network 7535 Metropolitan Dr. San Diego, CA 92108	(619) 542-4300 (referral only)	Mon - Fri 8:30am - 5:00pm	Countywide	Children, Adults, Older Adults	Spanish	Requirements met	Referral Only clients transition from separate behavioral health treatment location to Combined Behavioral Health-Primary Care Services at various Community Health Clinics. Services include substance abuse screening.
Outpatient Children, Youth & Families	Community Assessment Team (CAT) - Youth at Risk (YAR) Mental Health Systems, Inc. 940 E. Valley Pkwy. Ste. D Escondido, CA 92025	(760) 747-0205	Mon - Thu 8:00 am - 7:00 pm Fri 8:00 am - 5:00 pm	North Inland	Children, Adolescent and Families covered by Medi-Cal	Spanish	Bilingual/Bi-Cultural staff (Spanish/English)	Youth at risk for juvenile justice involvement.
Outpatient Children, Youth & Families	Cornerstone Providence Community Services 4660 El Cajon Blvd. Ste. 210 San Diego, CA 92115	(619) 640-3266	Mon - Fri 8:30 am - 5:00 pm (Day and evening hours by appointment)	Countywide	Children, Adolescents to age 18 with Medi-Cal	English, Vietnamese	Vietnamese	Clinic and school-based outpatient mental health services.

Type of Service	Program	Phone	Hours	Region	Populations	Languages	Cultural Competency	Specialties
Outpatient Children, Youth & Families	County of San Diego Child and Adolescent Southeast Mental Health Center 3177 Ocean View Blvd. San Diego, CA 92113	(619) 595-4400	Mon - Fri 8:00 am - 5:00 pm	Central	Children, Adolescents	Spanish	HL	Individual, group, family therapy case management.
Outpatient Children, Youth & Families	Crossroads Family Counseling Community Research Foundation 1679 E. Main St. Ste. 102 El Cajon, CA 92021	(619) 441-1907	Mon, Tue, Thu, Fri 9:00 am - 5:00 pm Wed 8:30 am - 6:30 pm	East	Children, Adolescents with Medi-Cal and Indigent	Spanish		TAY; Outreach to rural East county area; Individual and family therapy; Medication management at clinic, home or school.
Outpatient Children, Youth & Families	Douglas Young Youth and Family Services Community Research Foundation 7907 Ostrow St. Ste. F San Diego, CA 92111	(858) 300-8282	Mon - Wed 9:30 am - 6:00 pm Thu 12:00 pm - 8:00 pm Fri 9:00 am - 5:00 pm	North Central, Central	Children, Adolescents, Medi-Cal, Indigent	Spanish, Tagalog, Japanese, Chinese, Korean	GLBT, TAY, Latino, American, Asian Pacific Islander	TAY; Co-occurring; Clinic and School-based.

Type of Service	Program	Phone	Hours	Region	Populations	Languages	Cultural Competency	Specialties
Outpatient Children, Youth & Families	East County Behavioral Health Clinic San Diego Youth Services 1870 Cordell Ct. Ste. 101 El Cajon, CA 92020	(619) 448-9700	Mon - Fri 9:00 am - 5:00 pm (Evening hours by appointment)	East	At-risk children & youth and their families (Medi-Cal and no insurance)	Spanish	TAY, HL, Afr Amer, ME, GLBT, AI	At-risk youth. Outpatient services; Medication management; Crisis intervention.
Outpatient Children, Youth & Families	EPSDT/CAT Social Advocates for Youth (SAY San Diego, Inc.) 4275 El Cajon Blvd. Ste. 101 San Diego, CA 92105	(619) 582-9056 (Medi-Cal only)	Mon - Fri 8:30 am - 5:00 pm	Central	Children, Adolescents (ages 8-18) Medi-Cal only	Spanish	HL	Individual and family therapy; Juvenile Court wards.
Outpatient Children, Youth & Families	EPSDT, CAT, YAR North County Lifeline 200 Michigan Ave. Vista, CA 92084	(760) 726-4900	Mon - Fri 8:30 am - 5:00 pm (Evening hours by appointment)	North Coastal	Children, Adolescent	Spanish	At risk	Youth at risk for entering or re-entering the juvenile justice system.

Type of Service	Program	Phone	Hours	Region	Populations	Languages	Cultural Competency	Specialties
Outpatient Children, Youth & Families	Intensive Outpatient San Diego Unified School District 2351 Cardinal Ln. Annex B San Diego, CA 92123	(858) 573-2227	Mon - Fri 8:00 am - 5:00 pm	Central	Children, Adolescents	Spanish	Provide Spanish parenting groups	San Diego Unified School District/ Emotionally Disturbed students at various school sites.
Outpatient Children, Youth & Families	Logan Heights Family Counseling Center Family Health Center- Community Circle Central 2204 National Ave. San Diego, CA 92113	(619) 515-2355	Mon, Tues, Fri 8:00 am - 5:00 pm Tue, Wed 8:00 am - 8:00 pm	Central	Children, Adolescents, Adults, Older Adults	Spanish, French	Adult/Older Adult, Children, HML, HL	Medication management; Crisis intervention; Individual and Family therapy.
Outpatient Children, Youth & Families	Mental Health Resource Center Outpatient EPSDT San Diego Unified School District 2351 Cardinal Ln. Annex B San Diego, CA 92123	(858) 573-2227	Mon - Fri 9:00 am - 5:00 pm	Central	Children, Adolescents	Spanish, American Sign	Provide Spanish parenting groups	San Diego Unified School District / ED Medi-Cal Students; Transition Age, Preschool, Juvenile Court dependents and wards.

Type of Service	Program	Phone	Hours	Region	Populations	Languages	Cultural Competency	Specialties
Outpatient Children, Youth & Families	North County Lifeline EPSDT, CAT, YAR 707 Oceanside Blvd. Oceanside, CA 92054	(760) 757-0118	Mon - Fri 8:30 am -5:00pm (Evening hours by appointment)	North Coastal	Youth Age 6-17	Spanish		Juvenile delinquency prevention and diversion services provided at clinic, school sites and in-home.
Outpatient Children, Youth & Families	North County Assessment Center Green Oak Ranch New Alternatives 1237 Green Oak Rd. Vista, CA 92083	(760) 598-2803	Mon - Fri 9:00 am - 8:00 pm	North Central, North Inland, North Coastal	Children	Spanish		Assessment of children under 6 who are removed from care by Child Welfare Services or Probation.
Outpatient Children, Youth & Families	Nueva Vista Family Services Community Research Foundation 1161 Bay Blvd. Ste. B Chula Vista, CA 91911	(619) 585-7686	Mon, Tue, Wed 9:00 am - 7:00 pm Th, Fri 9:00 am - 5:00 pm	South	Children, Adolescents	Spanish	HL	Individual, group and family therapy; Medication management at clinic, home or school.

Type of Service	Program	Phone	Hours	Region	Populations	Languages	Cultural Competency	Specialties
Outpatient Children, Youth & Families	Palomar Family Counseling 1002 East Grand Ave. Escondido, CA 92025	(760) 741-2660	Mon - Fri 8:30 am - 5:00 pm	North Central, North Inland, North Coastal	Children, Adolescents, Medi-Cal Eligible, Special Education students at Escondido High School	Spanish	High risk	Outpatient mental health, rehabilitation and case management services for Medi-Cal eligible children to age 21, MHSA SED.
Outpatient Children, Youth & Families	Palomar Family Counseling 120 W. Hawthorne Fallbrook, CA 92028	(760) 731-3235	Mon - Fri 8:30 am - 5:00 pm (BY APPOINTMENT ONLY)	North Inland	Children, Adolescent on Medi-Cal	Spanish	Hispanic, AI, Afr Amer	Outpatient services for children, adolescents, and families. Uninsured /underinsured/Medi-Cal. Services are community-based and provided at schools, home or office.
Outpatient Children, Youth & Families	Para Las Familias Episcopal Community Service 1424 30th St. Ste. G San Diego, CA 92154	(619) 565-2650	Mon - Fri 8:00 am - 5:00 pm	South	Children	Spanish	Under 6, HL	Assessment; Individual, filial & family Therapy. Services provided at clinic, pre-school sites and in-home.

Type of Service	Program	Phone	Hours	Region	Populations	Languages	Cultural Competency	Specialties
Outpatient Children, Youth & Families	Prime ALLY National City 502 Euclid Ave. Ste. 103 National City, CA 91950	(619) 267-5115	Mon, Wed, Fri 8:30 am - 5:00 pm Tue, Thu 8:30 am - 6:00 pm	South	Children and Adolescents on Medi-Cal	Spanish	Staff are culturally diverse	Outpatient individual, group and family therapy; Medication management
Outpatient Children, Youth & Families	Prime ALLY Program 330 Moss St. Chula Vista, CA 91911	(619) 585-4228	Mon, Wed, Fri 8:30 am - 5:00 pm Tue, Thu 8:30 am - 6:00 pm	South	Children, Adolescents on Medi-Cal	Spanish	Staff are culturally diverse	Outpatient, individual, group and family therapy; Medication management.
Outpatient Children, Youth & Families	Rady Children's Hospital San Diego KidSTART Center EPSDT Clinic (South) 1261-D Third Ave. Chula Vista, CA 91911	(858) 966-5990	Mon - Fri 8:30 am - 5:00 pm	South	Medi-Cal children ages 0 - 5 years	Spanish	Under 6	Infant and early childhood mental health and developmental services; Complex social-emotional, behavioral and developmental needs; Trauma-informed evidence-based practices; Intensive care coordination.

Type of Service	Program	Phone	Hours	Region	Populations	Languages	Cultural Competency	Specialties
Outpatient Children, Youth & Families	Rady Children's Hospital San Diego KidSTART Center EPSDT Clinic (North Coastal) 3605 Vista Way Ste. 101 Oceanside, CA 92056	(858) 966-5990	Mon - Fri 8:00 am - 5:00 pm	North	Medi-Cal children ages 0 - 5 years	Spanish	Under 6	Infant and early childhood mental health and developmental services; complex social-emotional, behavioral and developmental needs; trauma-informed evidence-based practices; intensive care coordination.
Outpatient Children, Youth & Families	Rady Children's Hospital San Diego KidSTART Center EPSDT Clinic (Central-North Central) 3665 Kearny Villa Rd. Ste. 501 San Diego, CA 92123	(858) 576-1700 X5345	Mon - Fri 8:00 am - 5:00 pm	Central	Medi-Cal and Child Welfare Services eligible children ages 0 - 5 years	Spanish	Under 6	Infant and early childhood mental health and developmental services; Complex social-emotional, behavioral and developmental needs; Trauma-informed evidence-based practices; Intensive care coordination.
Outpatient Children, Youth & Families	Rady Children's Outpatient Psychiatry - North Coastal EPSDT School-Based Program 3605 Vista Way Ste. 258 Oceanside, CA 92056	(760) 758-1480	Mon - Fri 8:00 am - 5:00 pm (Evening hours by appointment)	North Coastal	Children, Adolescents, Educationally-Related MH Services, Medi-Cal, Healthy Families, Indigent	Spanish, Japanese, German	Latino and Japanese Staff available; all staff receive cultural competency training; interpreters used as needed.	Treat full spectrum of childhood disorders. Psychiatry services. Outpatient psychiatry services.

Type of Service	Program	Phone	Hours	Region	Populations	Languages	Cultural Competency	Specialties
Outpatient Children, Youth & Families	Rady Children's Outpatient Psychiatry - North Inland EPSDT School-Based Program 625 W. Citracado Pkwy. Ste. 102 Escondido, CA 92025	(760) 294-9270	Mon - Fri 8:00 am - 5:00 pm (Evenings hours by appointment)	North Inland	Children, Adolescents	Spanish; other interpreters available as needed	English-speaking and Latino families	Cognitive Behavioral Therapy for Children; Family therapy; Case management; Medication management.
Outpatient Children, Youth & Families	Rady Children's Hospital San Diego Developmental Evaluation Clinic 8010 Frost St. Ste. 200 San Diego, CA 92123	(858) 966-5408	Mon - Fri 8:00 am - 5:00 pm	Countywide	Children		Children under the age of six	Provides developmental and psychological evaluation of infants, pre-school and school aged children.
Outpatient Children, Youth & Families	Rady Children's Outpatient Psychiatry - Central, East, South EPSDT & MHSA School-Based Program 3665 Kearny Villa Rd. Ste. 101 San Diego, CA 92123	(858) 966-5832 (school referrals only)	Mon - Fri 8:00 am - 5:00 pm	Central, East, South	School referrals only; Medi-Cal & MHSA funding for indigent uninsured.	Spanish	English-speaking and Latino families	Elementary age children and adolescents. School-based, outpatient psychiatry services.

Type of Service	Program	Phone	Hours	Region	Populations	Languages	Cultural Competency	Specialties
Outpatient Children, Youth & Families	Rady Children's Outpatient Psychiatry - Central Clinic 3665 Kearny Villa Rd. Ste. 101 San Diego, CA 92123	(858) 966-5832	Mon - Fri 8:00 am - 5:00 pm	Central	Children, adolescents and young adults to age 21.			Individual and group therapy; Medication management.
Outpatient Children, Youth & Families	Rady Children's Outpatient Psychiatry - North Coastal Clinic 3605 Vista Way Ste. 258 Oceanside, CA 92056	(760) 758-1480	Mon - Fri 8:00 am - 5:00 pm (Evening hours by appointment)	North Coastal	Children, Adolescents	Spanish, Arabic, Japanese		Outpatient Mental Health services; Family therapy; Medication management.
Outpatient Children, Youth & Families	San Diego Center for Children Foster Family Agency Stabilization and Treatment 8775 Aero Dr. Ste. 132 San Diego, CA 92123	(858) 633-4115	Mon - Fri 8:00 am - 5:00 pm (Evening and weekend hours by appointment)	Countywide	Children, Adolescent Medi-Cal Eligible	Spanish		Outpatient mental health; Medication monitoring.

Type of Service	Program	Phone	Hours	Region	Populations	Languages	Cultural Competency	Specialties
Outpatient Children, Youth & Families	San Ysidro Health Center Youth Enhancement Services (YES) 3025 Beyer Blvd. Ste. E101 San Diego, CA 92154	(619) 428-5533	Mon, Tue 10:00 am - 7:00 pm Wed - Fri 9:00 am - 6:00 pm	South	Children, Adolescents Medi-Cal, Indigent	Spanish	HL, Afr Amer	Provides Bilingual/Bicultural individual, family and group therapy to children, youth and their families. Spanish-speaking staff available.
Outpatient Children, Youth & Families	San Diego Center for Children Wrapworks 3002 Armstrong St. San Diego, CA 92111	(858) 277-9550	Mon - Fri 8:00 am - 5:00 pm (Evening and weekend hours by appointment)	North Central	Children, Adolescent Medi-Cal Eligible	Spanish		Wraparound program for SED youth. Case management rehab services; Therapy; Crisis intervention; Medication monitoring.
Outpatient Children, Youth & Families	San Diego Center for Children East County Outpatient Counseling Program 7339 El Cajon Blvd. Ste. K La Mesa, CA 91942	(619) 668-6200	Mon - Fri 8:30 am - 5:00 pm	East	Children, Adolescents	Spanish		Individual, group and family therapy; Medication management in clinic, home or school.

Type of Service	Program	Phone	Hours	Region	Populations	Languages	Cultural Competency	Specialties
Outpatient Children, Youth & Families	South Bay Community Services 430 F St. Chula Vista, CA 91910	(619) 420-3620 (referral only)	Mon -Thu 8:30 am - 8:00 pm Fri 8:30 am - 5:00 pm	South	Children, Adolescents, Transitional Age Youth, Latino	Spanish	HL	Individual, group and family therapy provided at clinic, school sites and in-home. Rehabilitative services.
Outpatient Children, Youth & Families	Vista Hill Foundation - Escondido 1029 N. Broadway Escondido, CA 92026	(760) 489-4126	Mon - Fri 8:30 am - 5:00 pm	North Inland	Children	Spanish, Tagalog	AI, HL	Community and school-based outpatient mental health services to elementary, middle and high school students. No clinic services.
Outpatient Children, Youth & Families	Vista Hill Foundation - North Inland (Ramona) 1012 Main St. Ste. 101 Ramona, CA 92065	(760) 788-9724	Mon - Fri 8:00 am - 4:30 pm	North Inland	Children, Adolescents	Spanish	TAY, Under 6, HL, AI, SEA	Community and school-based outpatient mental health services to elementary, middle and high school students. No clinic services.

Type of Service	Program	Phone	Hours	Region	Populations	Languages	Cultural Competency	Specialties
Prevention and Early Intervention	Adult, Family & Peer Help Line - National Alliance on Mental Illness (NAMI)	Peer Line: (800) 523-5933 (619) 543-1434	Mon - Fri 10:00 am - 6:00 pm	Countywide	Adults			Non-crisis, peer phone support, mental health education and resources. Walk-in services not available, but information about support groups or other educational meetings may be made by phone.
Prevention and Early Intervention	Bridge to Recovery (Co-Occurring Disorders) 3851 Rosecrans San Diego, CA 92110	(619) 542-4166	Case Management Mon - Fri 8:30 am - 5:00 pm Hospital Visits Mon-Fri 8:30am -8:00pm Sat&Sun 8:30am-5:00pm	Central	Adults and older adults referred from crisis emergency facilities		TAY	Screening, brief intervention, referral and linkage, psycho-education groups, training for law enforcement on co-occurring issues.
Prevention and Early Intervention	Collaborative Native American Initiative Indian Health Council, Inc. 50100 Golsh Rd. Valley Center, CA 92082	(760) 749-1410	Mon - Fri 8:00 am - 5:00 pm	Countywide	All Ages		AI	Youth center; Elder programs and activities; Suicide prevention; Outreach and Education.

Type of Service	Program	Phone	Hours	Region	Populations	Languages	Cultural Competency	Specialties
Prevention and Early Intervention	Courage to Call Program Mental Health Systems, Inc.	211	24/7	Countywide	Veterans, Active Duty Military, Reservists, National Guard, Family Members			Education; Debriefings; Peer counseling; Linkage; Mental health information; Support hotline.
Prevention and Early Intervention	Elder Multicultural Access and Support Services (EMASS) Union of Pan Asian Communities (UPAC) 200 N. Ash St. Ste. 100 Escondido, CA 92027	(760) 233-1984	Mon - Fri 8:30 am - 5:00 pm	Countywide	Older Adult Somali, Hispanic, Middle Eastern, Filipino and African- American		HL, Afr Amer, SEA	Outreach and education, referral and linkage, benefits advocacy, peer counseling, transportation services, home and community- based services.
Prevention and Early Intervention	Lifelong Learning - Behavioral Health Education & Training (BHETA) Academy for Professional Excellence 6505 Alvarado Rd. Ste. 107 San Diego, CA 92120	(619) 594-0923	Mon - Fri 8:00am - 4:30 pm	Countywide	Older Adult, family caregivers, primary care service providers			Education curriculum specifically designed for older adults, families and caregivers and service providers.

Type of Service	Program	Phone	Hours	Region	Populations	Languages	Cultural Competency	Specialties
Prevention and Early Intervention	Positive Solutions Program Union of Pan Asian Communities 525 14th St. Ste. 200 San Diego, CA 92101	(619) 238-1783 Ext. 30	Mon - Fri 8:30 am - 5:00 pm	Central, North	Homebound Older Adult			Screening; Assessment; Brief intervention (PEARLS and/or psycho-education); Referral and linkage; Follow-up care.
Prevention and Early Intervention	REACHing Out Southern Caregiver Resource Center 3675 Ruffin Rd. Ste. 230 San Diego, CA 92123	(858) 268-4432	Mon - Fri 8:00 am - 5:00 pm	South	Hispanic caregivers of Older Adult Alzheimer's patients		HL	Personalized intervention; Home visits; Telephone support; Education; Skills training; Stress management education.
Prevention and Early Intervention	Rural Integrated Behavioral Health Services - Vista Hill (North County Health Services, Mtn. Valley's Health Center, Julian Medical Center, Borrego & Warner Springs school districts)	(760) 788-9724	Mon - Fri 8:00am - 4:00 pm	North	All Ages			Assessment; Brief intervention; Education; Mobile outreach.

Type of Service	Program	Phone	Hours	Region	Populations	Languages	Cultural Competency	Specialties
Prevention and Early Intervention	Salud San Ysidro Health Center 4004 Beyer Blvd. San Ysidro, CA 92173	(619) 662-4100	Mon - Fri 8:00am - 8:00pm Sat 8:00 - 2:00pm	South	Hispanic Older Adult at San Ysidro Hlth with a diagnosis of diabetes, exhibiting symptoms of or at risk of depression	Spanish	HL	Outreach in the primary care clinic and in community settings; Integrated diabetes and depression care.
Prevention and Early Intervention	Salud North County Health Services 150 Valpreda Rd. San Marcos, CA 92069	(760) 736-6700	Mon - Fri 8:00am-6:00pm Sat 8:00am - 5:00pm	North	Hispanic Older Adult at N. County Hlth Svcs with a diagnosis of diabetes, exhibiting symptoms of or at risk of depression	Spanish	HL	Outreach in the primary care clinic and in community settings; Integrated diabetes and depression care.
Prevention and Early Intervention	Youth and Family Peer Support Line Mental Health Systems, Inc.	Youth Line (877) 450-5463 Family Line (877) 470-5463	Mon - Fri 12:00 pm - 6:00 pm	Countywide	All Ages			Non-crisis, peer phone support and mental health education.

Type of Service	Program	Phone	Hours	Region	Populations	Languages	Cultural Competency	Specialties
Prevention and Early Intervention Children, Youth & Families	Positive Parenting Program (Triple P) Jewish Family Service 285 N. El Camino Real Ste. 211 Encinitas, CA 92024	(858) 637-3377	Mon - Thu 8:30 am - 5:00 pm Fri 8:30 am - 4:00 pm	Central, North Coastal	Parents and children (0-5 years) enrolled in Head Start or Early Head Start centers			Positive Parent Program (Triple P); Early intervention services; Referrals and linkage.
Prevention and Early Intervention Children, Youth & Families	School-Based Program Palomar Family Counseling Services, Inc. 1002 E. Grand Ave. Escondido, CA 92025	(760) 741-2660	Mon - Fri 8:30 am - 5:00 pm	North/ North Inland	School-age children and their families	English, Spanish	SEA, HL	Positive Behavioral Support (PBS), screening and early identification of at-risk children, community outreach to families, education and support.
Prevention and Early Intervention Children, Youth & Families	Alliance for Community Empowerment Union of Pan Asian Communities 5348 University Ave. #202 San Diego, CA 92105	(619) 265-2727	Mon - Fri 8:30 am - 5:00 pm	Central	Younger siblings of adolescent/ young adult gang members			Home-based services; Ongoing family supports; Positive peer-based services; Anger management; Conflict resolution.

Type of Service	Program	Phone	Hours	Region	Populations	Languages	Cultural Competency	Specialties
Prevention and Early Intervention Children, Youth & Families	Families as Partners South Bay Community Services 430 F St. Chula Vista, CA 91910	(619) 420-3620	Mon - Thu 8:30 am - 8:00 pm Fri 8:30 am - 5:00 pm	South	Children, Families			Safety and risk assessment for children conducted in the home, caregiver stress assessment, linkage and referral.
Prevention and Early Intervention Children, Youth & Families	Kick Start Providence Community Services 6153 Fairmount Ave. Ste. 260 San Diego, CA 92120	(619) 481-3790	Mon - Fri 8:30 am - 5:00 pm	Central	Adult		GLBT, HML, Afr Amer, HL, TAY, ME	Assessment; Family education; Mobile outreach; Early intervention; Information and linkage.
Prevention and Early Intervention Children, Youth & Families	School-Based Program San Diego Youth Services 3845 Spring St. Spring Valley, CA 91977	(619) 258-6877	Mon - Fri 9:00 am - 5:30 pm	East	School-age children and their families		SEA, HL	Positive Behavioral Support (PBS), screening and early identification of at-risk children; Community outreach to families; Education and Support.

Type of Service	Program	Phone	Hours	Region	Populations	Languages	Cultural Competency	Specialties
Prevention and Early Intervention Children, Youth & Families	South Region Trauma Exposed Services (Triple P) Fred Finch Youth Center 303 H St. Chula Vista, CA 91910	(619) 240-4880	Mon - Fri 8:00 am - 5:00 pm	South	Children at risk of being removed from home, Polinsky Children's Center residents			Short-term services; Referrals for comprehensive services; Family education.
Probation Services	Dual Diagnosis Social Advocates for Youth San Diego (SAY San Diego, Inc.) 2901 Meadowlark Dr. San Diego, CA 92123	(619) 283-9624	Mon-Fri 8:00am-5:00pm (evening hours vary)	Countywide	Youth in probation programs			Juvenile Court wards; mental health and substance abuse services including individual, group and family counseling; Psychosocial and substance abuse education.
Residential Adult	Casa Pacifica 321 Cassidy St. Oceanside, CA 92054	(760) 721-2171	24/7	Countywide	Adults, Older Adults		Older Adult, HML, HL	Adult residential psychosocial treatment center.

Type of Service	Program	Phone	Hours	Region	Populations	Languages	Cultural Competency	Specialties
Residential Adult	Uptown Safe Haven Episcopal Community Services 2822 Fifth Ave. San Diego, CA 92103	(619) 294-7013	24/7	Central	Adults, Older Adults		HML	Volunteer Participation; Vocational, educational and social support; Self-help recovery; Dual diagnosis groups.
Residential Children, Youth & Families	San Diego Center for Children 3002 Armstrong St. San Diego, CA 92111	(858) 277-9550	Mon - Fri 8:00am - 5:00pm	Countywide	Children, Adolescents	Spanish, Tagalog, French, Italian		Strength-based therapy in residential setting. Provides day treatment on campus; access to non-public school on campus if IEP(Individualized Education Program) indicates.
Residential Children, Youth & Families	The Bridgman Home San Diego Youth Services 968 Corte Maria Chula Vista, CA 91911	Office (619) 651-8470 Video relay (858) 514-1235	24/7	Countywide	Adolescents	American Sign	Deaf and Hard of Hearing	Deaf and hard of hearing.

Type of Service	Program	Phone	Hours	Region	Populations	Languages	Cultural Competency	Specialties
Therapeutic Behavioral Services Children, Youth & Families	Therapeutic Behavioral Services (TBS) New Alternatives 2535 Kettner Blvd. Ste. 1A4 San Diego, CA 92101	(619) 615-0701	Mon - Fri 8:30 am - 5:00 pm	Countywide	Children, Adolescents, TAY, Families (Medi-Cal eligible up to age 21)	Spanish, Tagalog, Arabic, Vietnamese		1:1 Behavior coaching, In-home services; Case management, Voluntary short-term intensive mental health services.